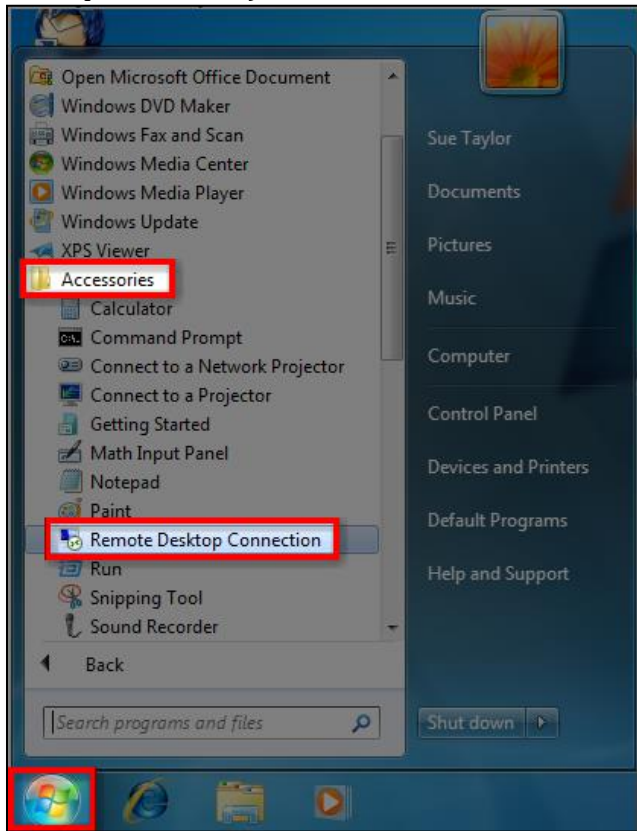
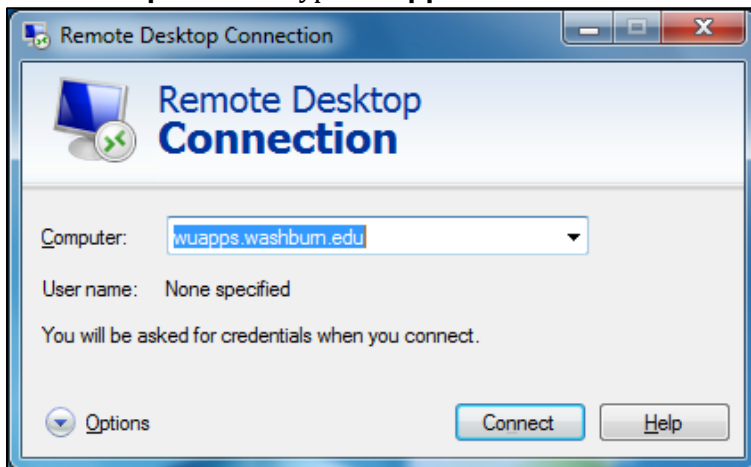

CONNECTING TO WUAPPS USING WINDOWS 7

1. Open **Remote Desktop Connection** (Windows button > All Programs > Accessories > Remote Desktop Connection)

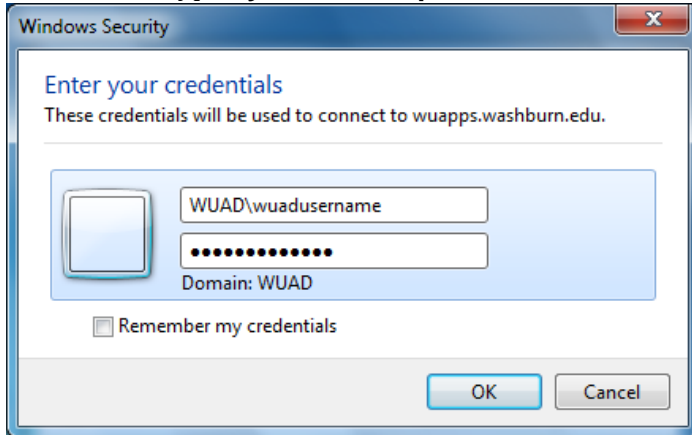


2. In the **Computer** field type **wuapps.washburn.edu** and click the **Connect** button.



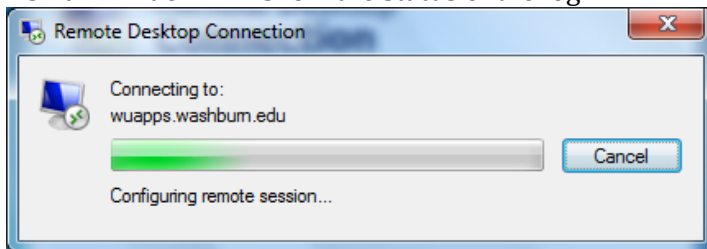
Connecting to WUAPPS Using Windows Vista or 7

3. A new window will appear. In the top field, type **WUAD\<your WUAD username>** and in the bottom field, type **<your WUAD password>**. Click the **OK** button.

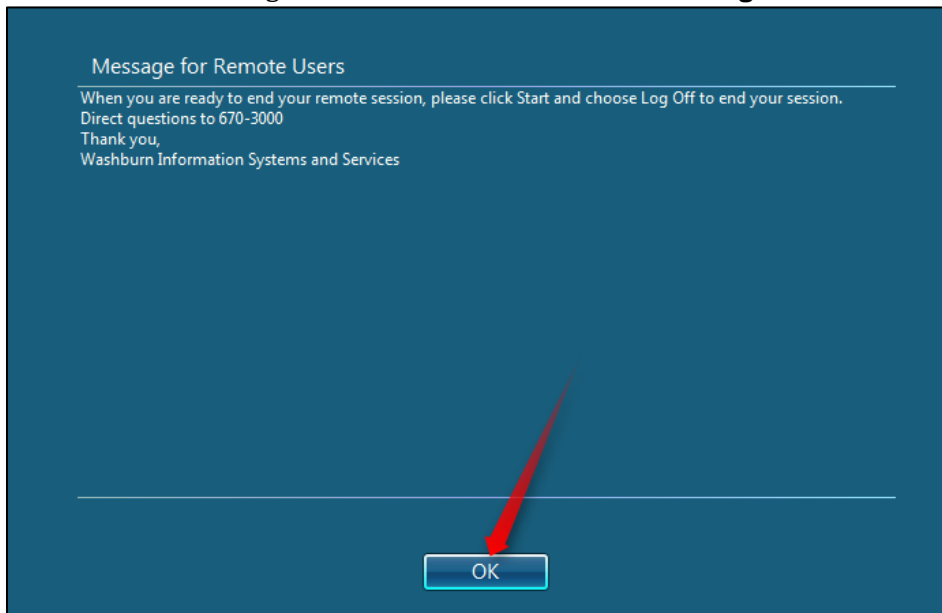


NOTE: IF YOU ARE RUNNING REMOTE DESKTOP FROM A COMPUTER ON CAMPUS THAT YOU LOGGED INTO USING WUAD, YOUR LOGIN USERNAME IS PASSED AUTOMATICALLY BUT YOU WILL NEED TO RE-ENTER YOUR PASSWORD.

4. A small window will show the status of the login.

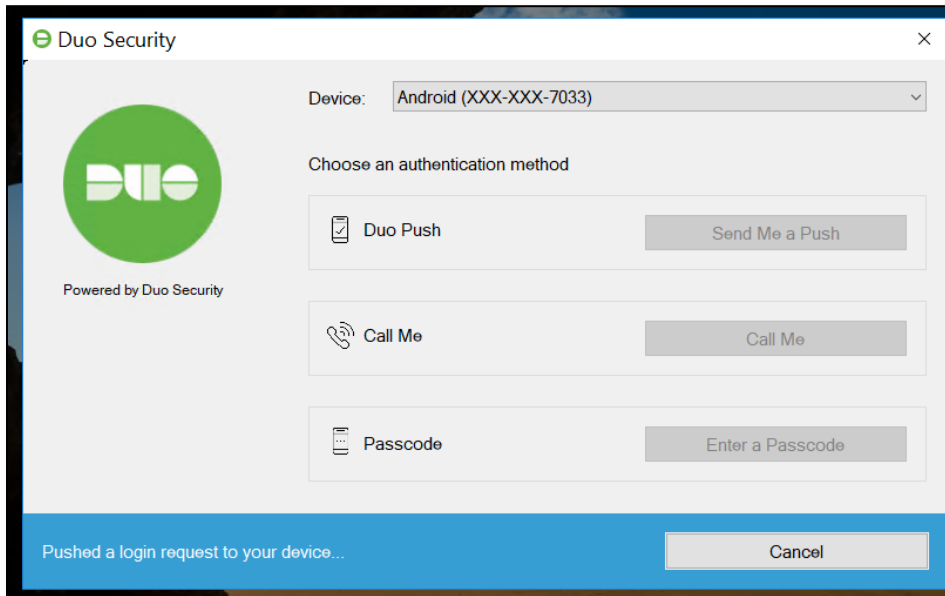


5. Your screen will change. Click the **OK** button on the **Message for Remote Users** window.



Connecting to WUAPPS Using Windows Vista or 7

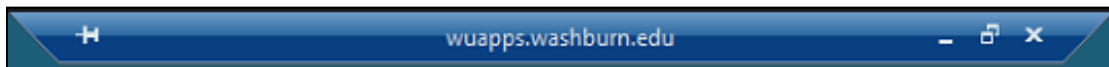
- If you have signed up for Duo Security, you will receive a Duo notification indicating a push request was sent to your device. **Approve the request on the device to continue.**



- Messages will appear to show your profile is being loaded and applied. After they disappear, you are in WUAPPS.



- While you are in WUAPPS, you will see a bar at the top of your screen.



- When you are ready to leave WUAPPS, **double-click the Log Off icon** on the desktop.

