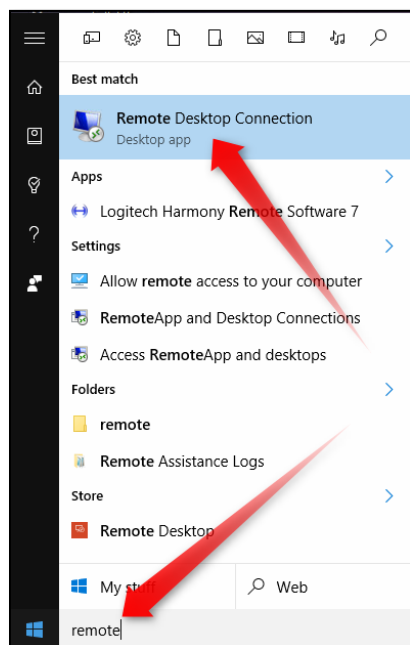
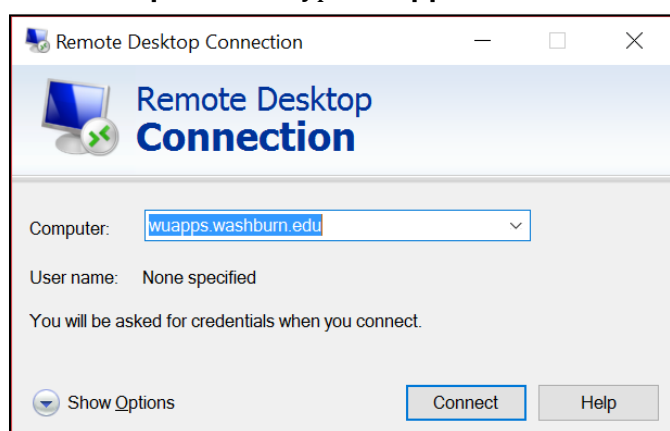

CONNECTING TO WUAPPS USING WINDOWS 10

1. Type **Remote Desktop Connection** (or begin typing) into the search box next to the Windows button
2. Select **Remote Desktop Connection** when it appears in the list

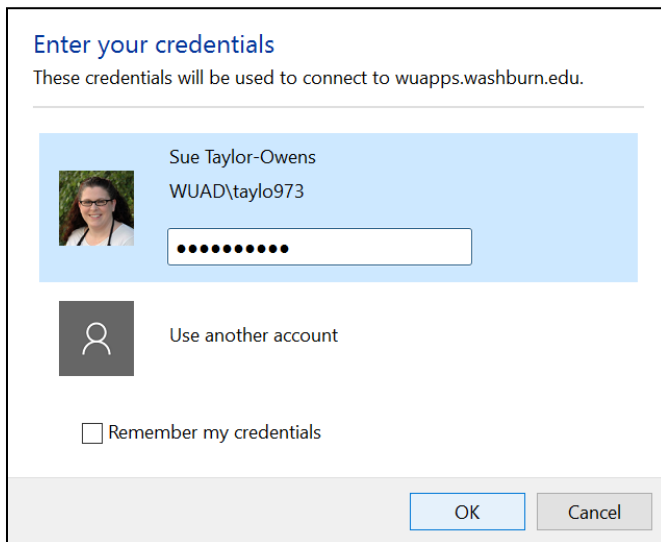


3. In the **Computer** field type **wuapps.washburn.edu** and click the **Connect** button.



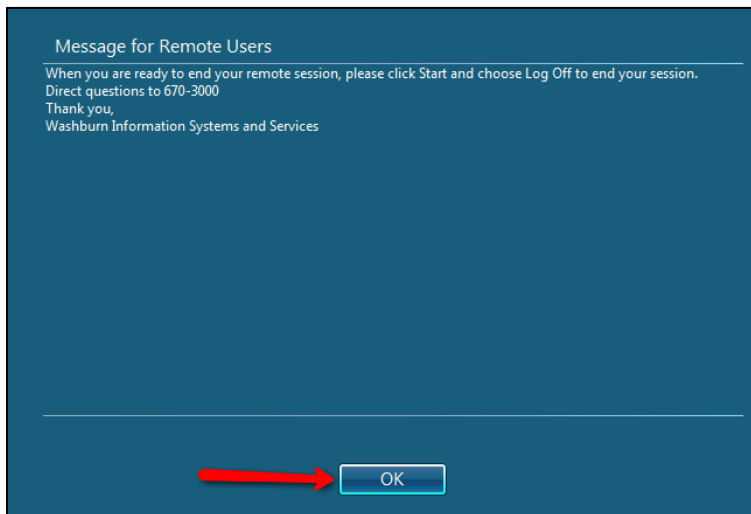
Connecting to WUAPPS Using Windows 10

4. A new window will appear. In the top field, type **WUAD\<your WUAD username>** and in the bottom field, type **<your WUAD password>**. Click the **OK** button.



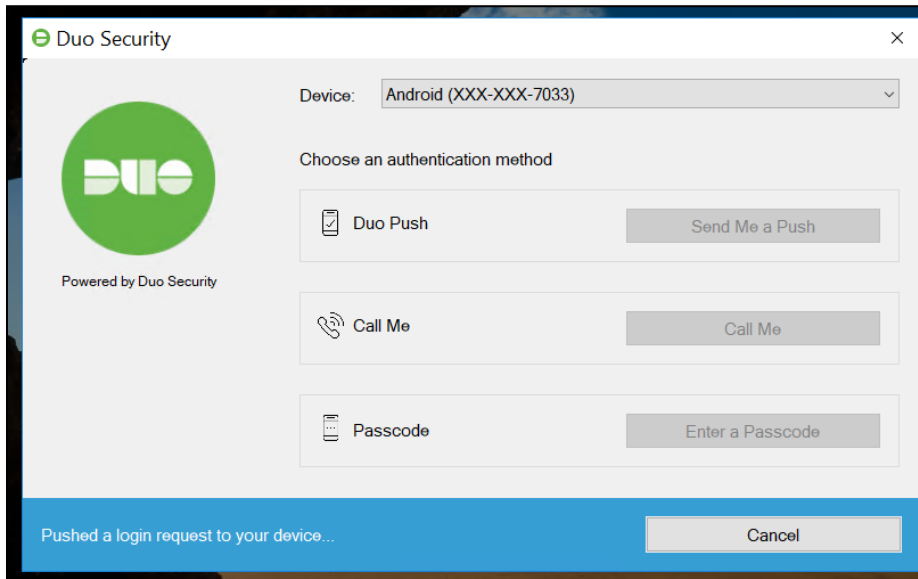
The screenshot shows a Windows login dialog box titled "Enter your credentials". Below the title, it says "These credentials will be used to connect to wuapps.washburn.edu." There are two input fields: the top one contains "Sue Taylor-Owens" and "WUAD\taylo973", and the bottom one is a password field with ten dots. Below the fields is a "Use another account" option with a person icon. At the bottom left, there is a checkbox labeled "Remember my credentials". At the bottom right, there are "OK" and "Cancel" buttons.

5. A small window will show the status of the login.
6. When login is complete, your screen will change. Click the **OK** button on the **Message for Remote Users** window.

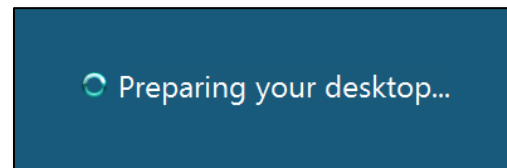
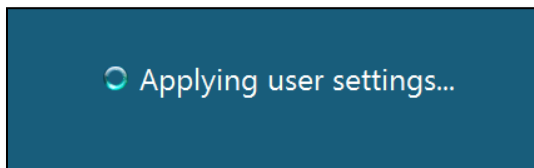


Connecting to WUAPPS Using Windows 10

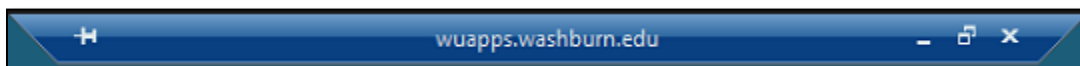
7. If you have signed up for Duo Security, you will receive a Duo notification indicating a push request was sent to your device. **Approve the request on the device to continue.**



8. Messages will appear to show your profile is being loaded and applied. After they disappear, you are in WUAPPS.



9. While you are in WUAPPS, you will see a bar at the top of your screen.



10. When you are ready to leave WUAPPS, **double-click the Log Off icon** on the desktop.

