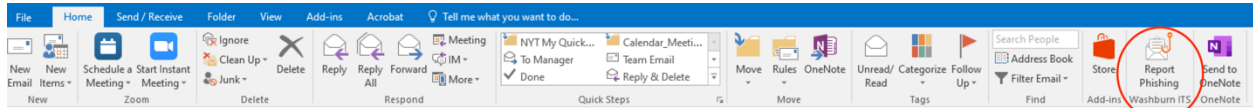


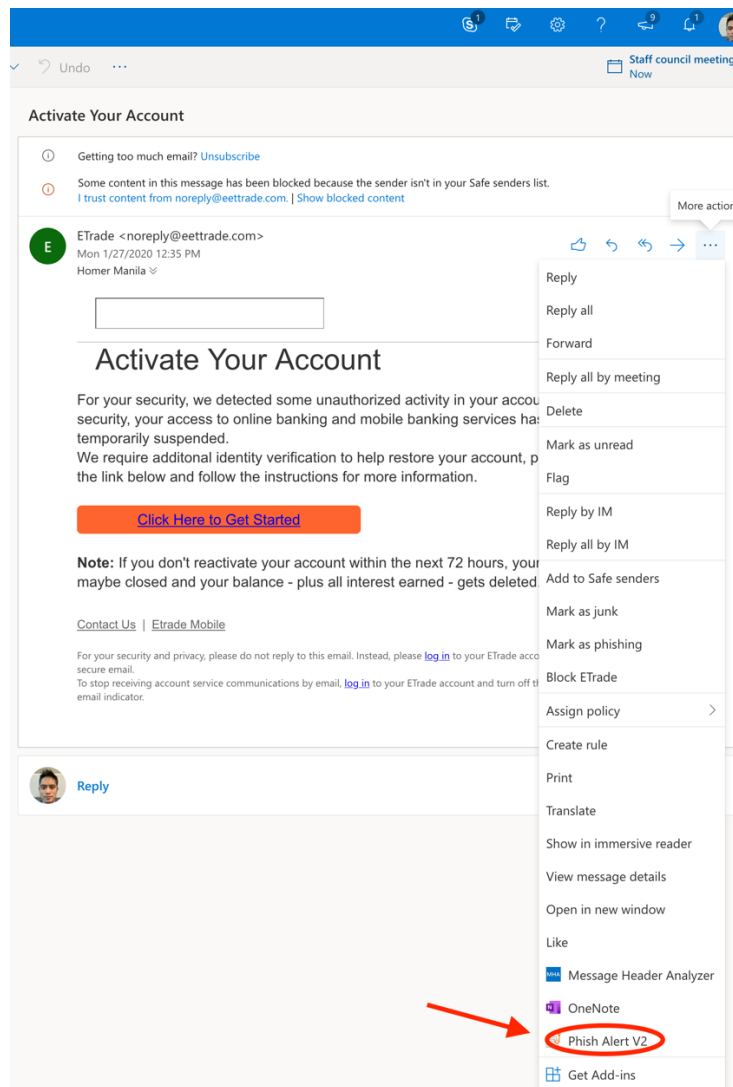
How to Report a Phishing Email

Did you know you can report a phishing email easily to ITS? You can do it straight from any versions of Outlook. This method is better than a forward, as it will capture all pertinent info needed to respond and address a phishing campaign.

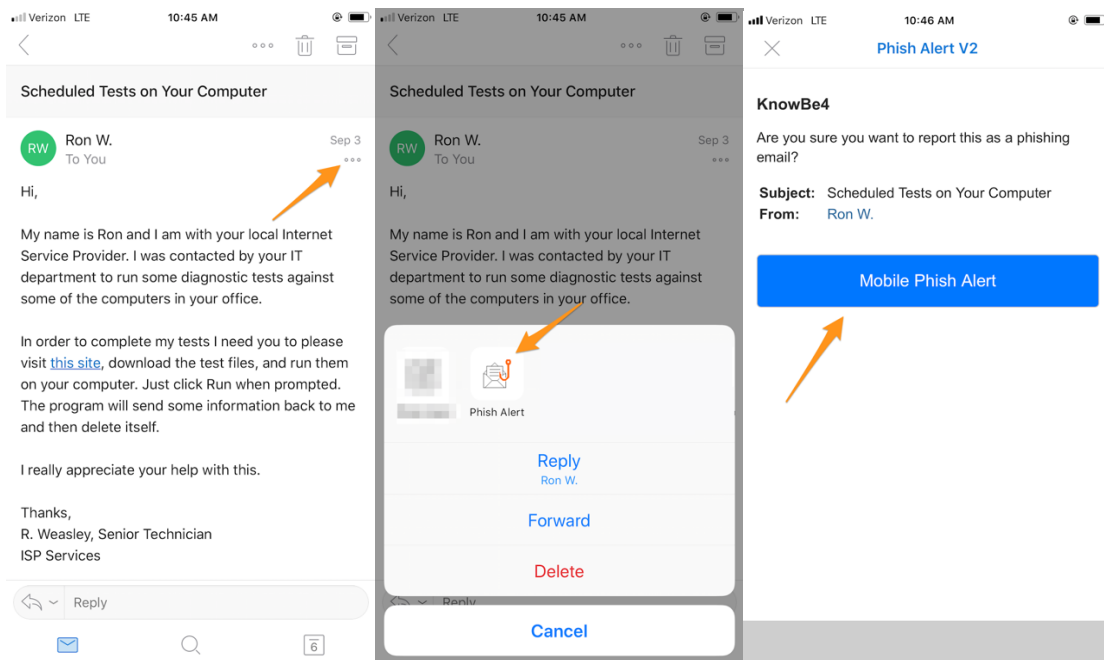
Desktop Outlook (under the Home tab):



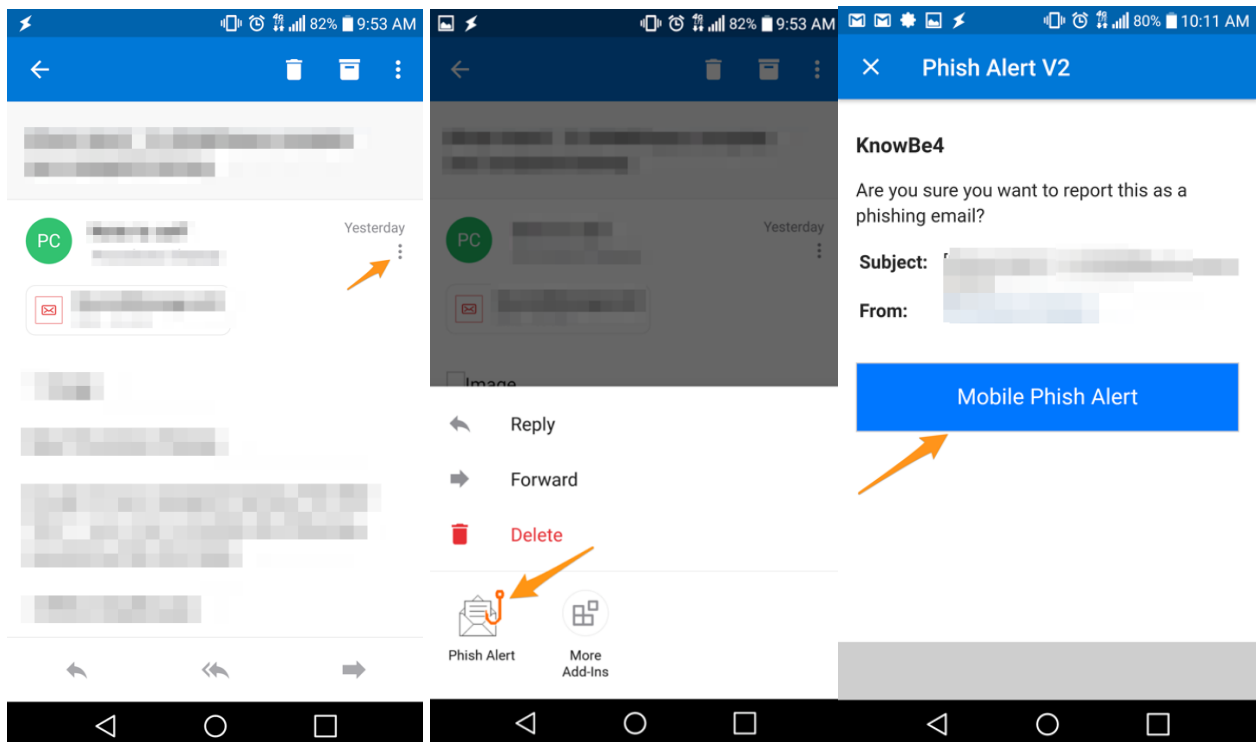
Outlook Web Access (under the ellipsis (...)):



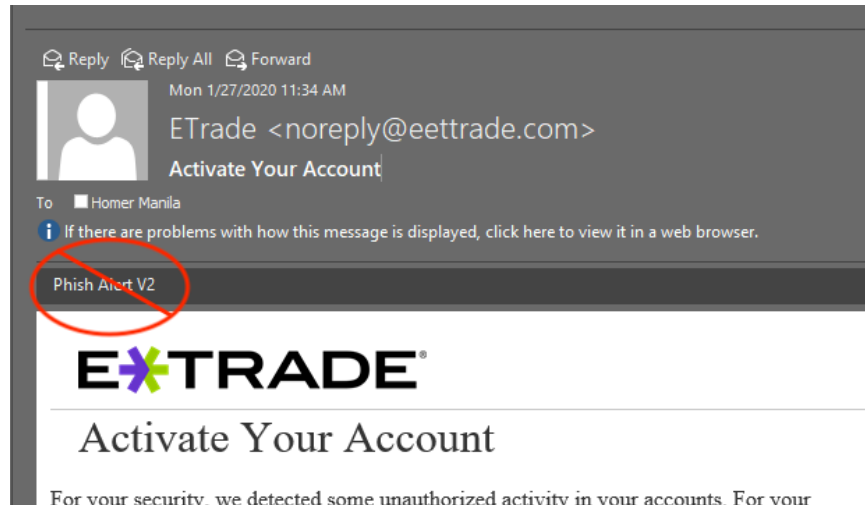
Outlook Mobile App on iOS Devices – iPhone, iPad (under the ellipsis (...)):



Outlook Mobile App on Android Devices (under the three dots):



Please note: There is a known bug in the Phish Alert V2 button on Outlook clients running on Washburn managed/owned desktops/laptops running Windows. Please do not attempt to use as it will not work. Use one of the methods listed above to report phishing instead. ITS apologizes for the confusion.



If you have any questions, please contact ITS User Services at 785-670-3000 or email support@washburn.edu.