

The Leadership Studies Minor at Washburn University is an interdisciplinary program open to baccalaureate students in all majors and degree programs. The program contains both theoretical and experiential components and is designed to be completed concurrently with earning a baccalaureate degree from Washburn University. The primary objective of the program is to teach students about leadership and prepare them to take on any cross-sectoral leadership positions in the future by providing hands on leadership experiences while a student at Washburn.

Requirements for the Minor

Students will complete at least 18 credit hours of coursework and earn a minimum of a C grade in each of these courses. In addition to twelve credit hours of required courses, students must complete at least 6 credit hours of elective courses from one of four thematic tracks with 3 credit hours being from upper division courses. Some courses require completion of relevant departmental prerequisites (See diagram on back for sequence of courses).

The Leadership Institute permits using “correlate” courses to satisfy the requirements of both a major and the Leadership minor (e.g. a student with a Management major could include major course requirements from the College of Arts & Sciences, but cannot select Management courses from the list of Minor electives for the Leadership Minor). Further, Business electives within a Business major (this includes Economics and Accounting) cannot also be used for the Leadership Minor.

Electives can serve to fulfill a General Education requirement as well, according to current General Education policies. LE100 qualifies as a Social Science General Education course and LE200, when enrolled as the crosslisted HN201 course, qualifies as an Arts and Humanities General Education Course.

Nursing students can supplement NU 450 (2 credits) and NU 462 (2 credits) as substitutes for LE 300 and LE 400; however, students opting to complete their Leadership Minor or Certificate in this way, must enroll in LE301 (1 credit) Leadership Skills Integration Course concurrently with NU 450 (2 credits) to substitute for LE 300 (3 credits), and LE401 (1 credit) Leadership Internship Integration Course concurrently with NU462 (2 credits) to substitute for LE400 (3 credits). The content in LE301 and LE401 will integrate coursework in the departmental leadership course with the content covered in the Leadership Institute specific courses, LE300 and LE400.

Transferability of applicable course credit will be prescribed for each institution in WU’s transfer guide, though ultimately is left at the discretion of each academic department. Transfer students will only be able to transfer a maximum of 6 credit hours toward completion of a leadership studies minor.

At the approval of the Leadership Institute Director, the elective track can be customized to an individual student’s interests. To elect this specialized track option, a student must present a justifiable rationale to take one class from each of two separate tracks in order to satisfy the six hours of elective credits required. This rationale should be based on the student’s individual career interests and academic plan. Furthermore, in unique circumstances based on a personalized opportunity, a student can include up to three independent study credit hours with their specialized track. Students electing this option would gain approval from their major department utilizing an independent study course number in that discipline. A Leadership Studies Minor Exception form needs to be completed and approved by the Leadership Institute Director prior to the exception deadline.

A Leadership Studies Minor Declaration Form must be completed and approved by the Leadership Institute Director as soon as the Minor is undertaken. This form may be obtained from the Leadership Institute office, Benton Hall 408. The requirements governing the Leadership Studies Minor are only available online in the Washburn University Catalog. For more information about the Leadership Studies Minor, contact the Leadership Institute office at 785-670-2000 or email leadership@washburn.edu. Information is also available at the Leadership Institute website, www.washburn.edu/leadership.

Required Courses – 12 credit hours required

- LE 100/HN 202 (appropriate section) (3 credits)
- LE 200/HN 201 (appropriate section) (3 credits)
- LE 300 (3 credits)
- LE 400 (3 credits)

Elective Courses – 6 credit hours from one thematic track required. Elective courses which may count towards the minor include:

Leadership in Business, Communication and the Media

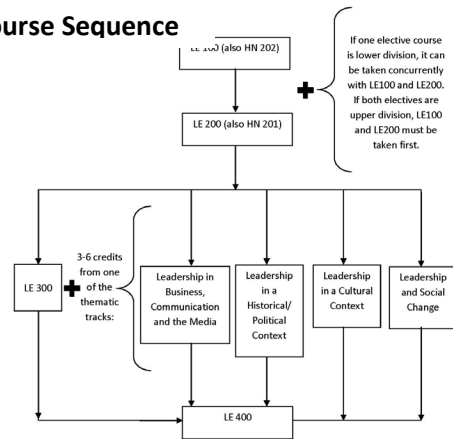
- BU342 Organization & Management*
- BU343 – Entrepreneurship, Creativity and Innovation*
- BU345 Human Resources Management*
- BU346 Organizational Behavior*
- BU355 International Business*
- </CN101 Principles & Practices of Human Communication
- </CN150 Public Speaking
- CN302 Communication Theory
- CN308 Organizational Communication
- CN330 Communication in Conflict/Negotiation
- </CN341 Persuasive Speaking*
- CN342 Communication in Teams and Groups
- CN350 Persuasion
- </CN351 Interpersonal Communication
- CN363 Intercultural Communication
- CN367 Crisis Communications*
- MM360 Minorities and the Media*
- MM400 Media Literacy*
- MM411 Entrepreneurial Media*
- MM485 International Media Systems*
- PH313 Professional Ethics*

Leadership and Social Change

- AN336 336 Globalization*
- </BI202 Biology of Behavior
- </BI203 Human Impact on the Environment
- CN361 Communication in Social Movements
- CN364 Gender Communication
- HS300 Prevention and Social Change
- HS325 Group Work in Human Services
- HS355 Peacemaking
- LE320-322 Leadership through Campus Experience (3 credits total for elective)
- LE375 Gender and Leadership
- MM 400 Media Literacy*
- </PH 102 Introduction to Moral Problems
- </PH 104 Introduction to Logic and Critical Thinking
- PH211 Introduction to Ethical Theory*
- PO395 Non Profit Management
- </PY100 Basic Concepts in Psychology
- PY310 Social Psychology*
- PY325 Community Psychology*
- SO330 Collective Behavior: Crowds, Disasters, and Social Movements*
- SO338/AN 338 Strategies for Social Change*
- SW352 Social Policy & Programs*

* Completion of prerequisite course(s) required prior to enrollment in course. </Courses marked with </ are part of the University's General Education program.

Course Sequence



Leadership in a Cultural Context

- </AN112 Cultural Anthropology
- AN321 Anthropology of Women*
- AN324 History and Theory of Anthropology*
- AN333 Culture and Personality*
- BU355 International Business*
- BU356 Cross-cultural Management*
- CJ303 Diversity in American Culture
- CN363 Intercultural Communication*
- </EN110 Multi-Cultural American Literature
- </EN214 Women and Literature
- HI329 Civil Rights Movement*
- HI381 History and Psychology of Sex and Gender*
- HS450 Multicultural Issues in Human Services
- LE375 Gender and Leadership
- MM360 Minorities and the Media*
- MM485 International Media Systems*
- PY309 Theories of Personality*
- </RG102 World Religions
- </SO100 Introduction to Sociology
- </SO101 Social Problems
- SO207/AN 207 Race and Ethnic Relations*
- SO310 Social Class in the US*
- SO314 Organizations*
- TA381 Technology and Ecology
- </WG 375 Women and Popular Culture

Leadership in a Historical/Political Context

- CN309 Political Communication*
- </HI102 Modern World History
- </HI111 History of the United States through the Civil War
- </HI112 History of the United States since the Civil War
- HI303 Colonial America to 1763*
- HI305 Early National U.S.*
- HI315 Women in U.S. History*
- HI317 Topeka and Urban American History*
- HI380 Women in World History*
- MS110 Fundamentals of Military Leadership
- ME432 Hitler, World War II, and the Holocaust
- PH103 Introduction to Political Philosophy
- PH312 Social-Political Philosophy*
- </PO106 The Government of the U.S.
- </PO107 Kansas and the U.S. State and Local Government
- </PO235 Intro to Comparative Politics
- PO245 Intro to Public Administration
- PO305 Public Policy
- PO337 Religions and Politics*