

Leadership Studies Minor Information

Leadership Institute
Washburn University

Name: _____

Date: _____

Anticipated Graduation Date: _____

WIN: _____

Major(s): _____

The Leadership Studies Minor at Washburn University is an interdisciplinary program open to baccalaureate students in all majors and degree programs. The program contains both theoretical and experiential components and is designed to be completed concurrently with earning a baccalaureate degree from Washburn University. The primary objective of the program is to teach students about leadership and prepare them to take on any cross-sectoral leadership positions in the future by providing hands on leadership experiences while a student at Washburn.

Requirements for the Minor

Students will complete at least 18 credit hours of coursework with a C average or better. In addition to twelve credit hours of required courses, students must complete at least 6 credit hours of elective courses from one of four thematic tracks with 3 credit hours being from upper division courses. Some courses require completion of relevant departmental prerequisites (See diagram for sequence of courses).

The Leadership Institute permits using “correlate” courses to satisfy the requirements of both a major and the Leadership minor (e.g. a student with a Management major could include major course requirements from the College of Arts & Sciences, but cannot select Management courses from the list of Minor electives for the Leadership Minor). Further, Business electives within a Business major (this includes Economics and Accounting) cannot also be used for the Leadership Minor.

Electives can serve to fulfill a General Education requirement as well, according to current General Education policies. LE100, when enrolled as the crosslisted HN202 course, qualifies as a Social Science General Education course and LE200, when enrolled as the crosslisted HN201 course, qualifies as a Arts and Humanities General Education Course.

Nursing students can supplement NU479 (3 credits) and NU490 (2 credits) as substitutes for LE300 and LE400; however, students opting to take NU490 (2 credits) instead of LE400 (3 credits) will be required to complete an additional project in the course to receive an additional credit hour. This additional capstone project will comprehensively integrate all aspects of leadership coursework completed for the minor prior to NU490.

Transferability of applicable course credit will be prescribed for each institution in WU’s transfer guide, though ultimately is left at the discretion of each academic department. Transfer students will only be able to transfer a maximum of 6 credit hours toward completion of a leadership studies minor.

At the approval of the Leadership Institute Director, the elective track can be customized to an individual student’s interests. Furthermore, in unique circumstances based on a personalized opportunity, a student can include up to three independent study credit hours with their specialized track. Students electing this option would gain approval from their major department utilizing an independent study course number in that discipline. To elect this specialized track option, a student must present a justifiable rationale to take one class from each of two separate tracks in order to satisfy the six hours of elective credits required. This rationale should be based on the student’s individual career interests and academic plan. A Leadership Studies Minor Exception form needs to be completed and approved by the Leadership Institute Director prior to the exception deadline.

A Leadership Studies Minor Declaration Form must be completed and approved by the Leadership Institute Director as soon as the Minor is undertaken. This form may be obtained from the Leadership Institute office, Benton Hall 408. The requirements governing the Leadership Studies Minor are only available online in the 2010-2011 Washburn University Catalog. For more information about the Leadership Studies Minor, contact the Leadership Institute office at 785-670-2000 or email leadership@washburn.edu. Information is also available at the Leadership Institute website, www.washburn.edu/leadership.

Required Courses – 12 credit hours required

LE 100/HN 202 (appropriate section) (3 credits)
LE 200/HN201 (appropriate section) (3 credits)
LE 300 (3 credits)
LE 400 (3 credits)

Elective Courses – 6 credit hours from one thematic track required. Elective courses which may count towards the minor include:

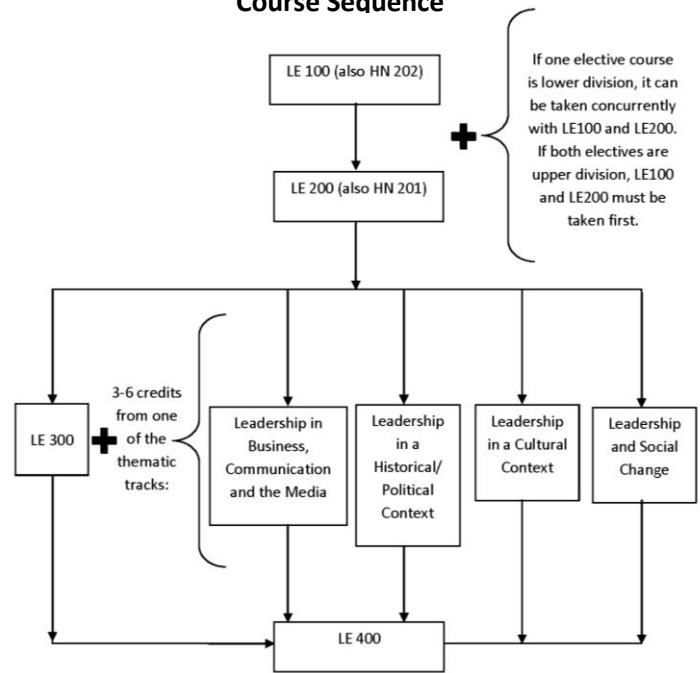
Leadership in Business, Communication and the Media

BU342 – Organization & Management*
BU345 – Human Resources Management*
BU346 – Organizational Behavior*
BU355 – International Business*
CN101 – Principles & Practices of Human Comm
CN308 – Organizational Communication*
CN309 – Political Communication*
CN330 – Communication in Conflict/Negotiation*
CN341 – Persuasive Speaking*
CN342 – Small Group Communication*
CN351 – Interpersonal Communication*
CN361 – Communication in Social Movements*
CN363 – Intercultural Communication*
CN365 – Business/Professional Presentation
CN366 – Nonverbal Communication*
CN370 – Training and Development*
MM363 – Promotions Writing*
MM411 – Media Management*
MM420 – Public Relations Campaigns*

Leadership and Social Change

AN336/SO336 – Globalization*
BI203 – Human Impact on the Environment
CN307 – Communication and Legal Processes*
CN361 – Communication in Social Movements*
CN364 – Gender and Communication*
HS302 – Social Change and Advocacy in Hum. Ser.
HS355 – Peacemaking
IS180 – Peace, Justice, and Conflict Resolution
MM400 – Media Effects*
PH102 – Introduction to Moral Problems
PH220 – Logic
PO352 – Peace Studies & Conflict Resolution
PO395 – Non Profit Management
PY310 – Social Psychology*
PY325 – Community Psychology*
SO330 – Crowds, Disasters, and Social Movements*
SO338/AN338 – Strategies for Social Change*
SW326 – Macro Human Behavior & Social Enviro.*
SW351 – Social Policy & Program Analysis*

Course Sequence



Leadership in a Cultural Context

AN112 – Cultural Anthropology
AN333 – Culture and Personality*
BU355 – International Business*
CJ303 – Diversity in American Culture
CN306 – Health Communication*
CN363 – Intercultural Communication*
EN110 – American Ethnic Literature
EN133 – Stories Around the World
HI329 – Civil Rights Movement*
HS325 – Group Work in Human Services
HS450 – Multicultural Issues in Human Services
PO225 – Introduction to International Politics
RG102 – World Religions
SO207/AN207 – Race and Ethnic Relations*
SO312/AN312 – Culture, Health, and Illness*
TA310 – Technology and Society

Leadership in a Historical/Political Context

CN309 – Political Communication*
HI380 – Women in World History*
HS445 – Legal, Ethical & Policy Issues in H.S.
MS110 – Fundamentals of Military Leadership
PO106 – The Government of the U.S.
PO107 – American State and Local Government
PO235 – Intro to Comparative Politics
PO245 – Intro to Public Administration
PO321 – The Presidency
PO337 – Religions and Politics*
PO338 – Contemporary American Politics*

* Completion of prerequisite course(s) required prior to enrollment in course.