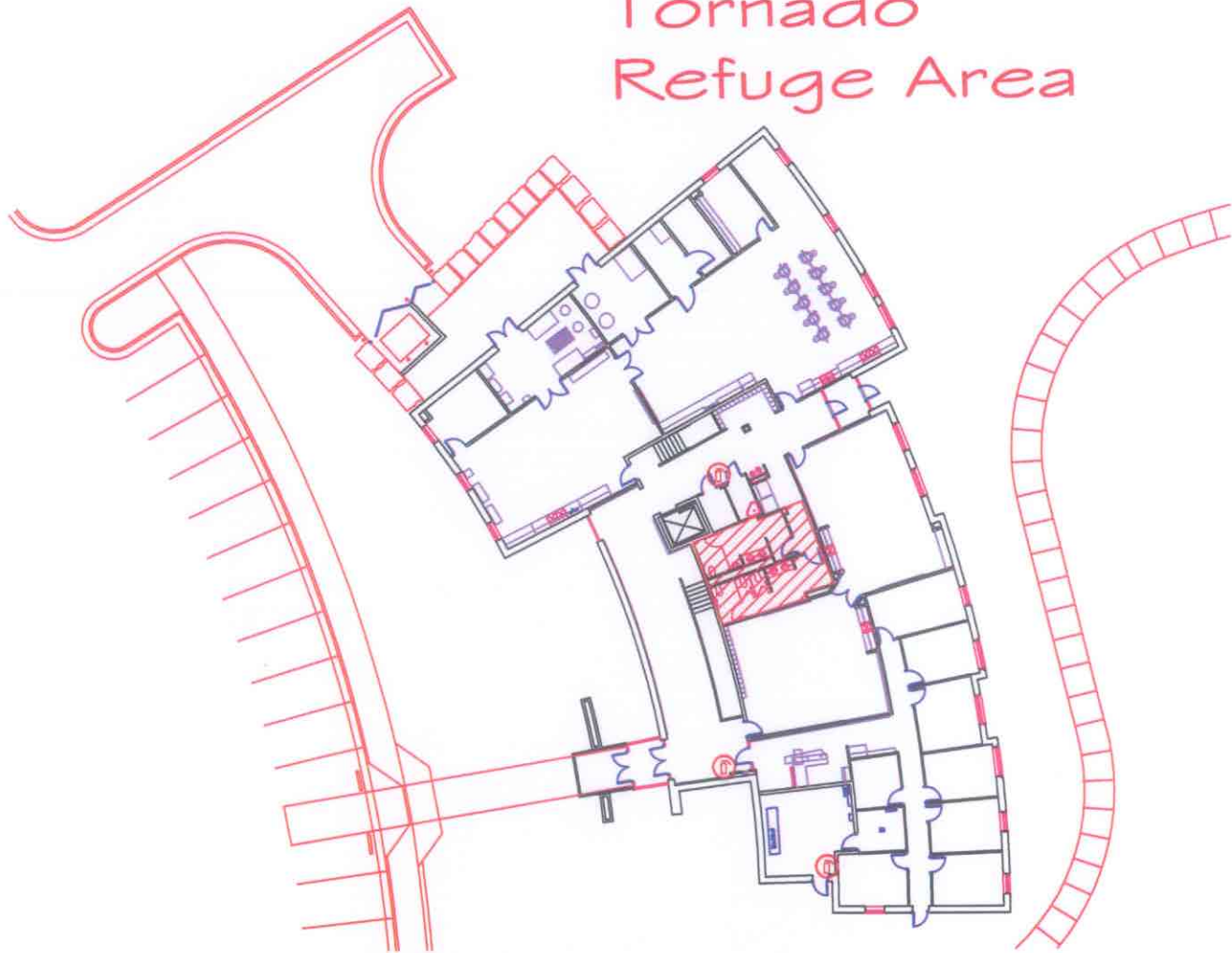


# Tornado Refuge Area



## FIRST FLOOR PLAN



REV.

### ART BUILDING

DEPARTMENT OF FACILITIES SERVICES  
**WASHBURN  
UNIVERSITY**  
1746 SW DUROW DRIVE  
TOPEKA, KANSAS

DATE: JUNE, 2004

DRAWN BY: NJG

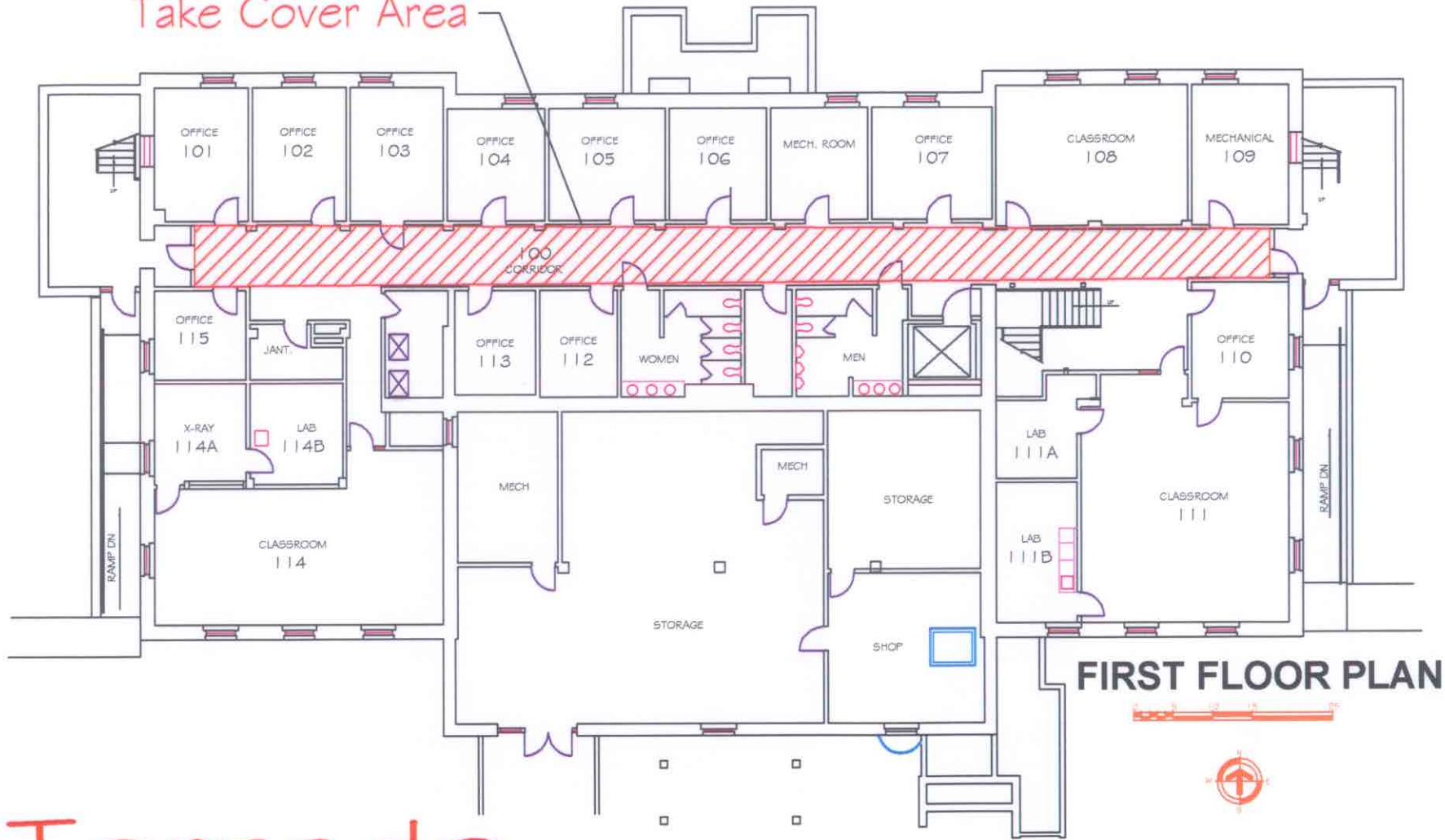
SHEET NO.

OF SHEETS

DRAWING NO.

38a

Take Cover Area



Tornado  
Refuge Area

REV. AUG 73-FB, 1077MM; 603 LM., 225 M 8-56 12-35 M.L.R. 12-29 F.C.T. 9-30 F.C.T. 7-24 F.C.T. 4-27 W

### BENTON HALL

DEPARTMENT OF FACILITIES SERVICES  
**WASHBURN  
UNIVERSITY**  
1830 SW JEWELL  
TOPEKA, KANSAS

DATE: APRIL, 1973

DRAWN BY: K.B.

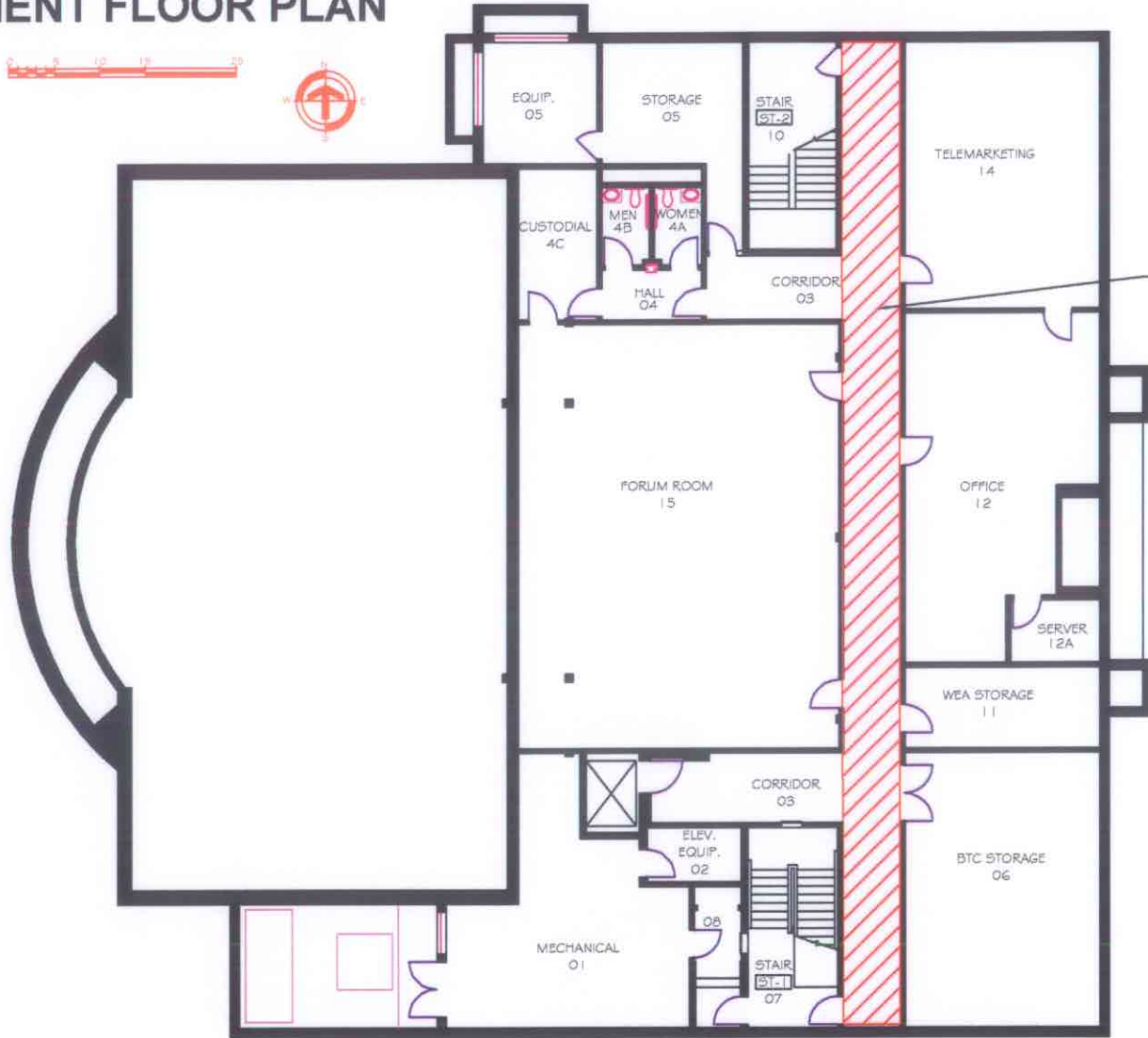
SHEET NO.

DRAWING NO.

OF SHEETS

11a

# BASEMENT FLOOR PLAN



Take Cover Area

Tornado  
Refuge Area

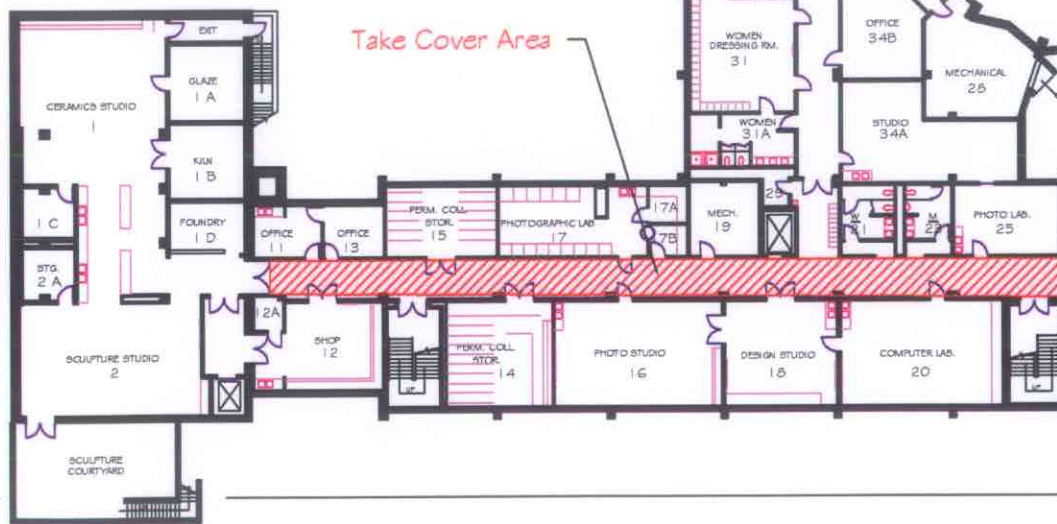
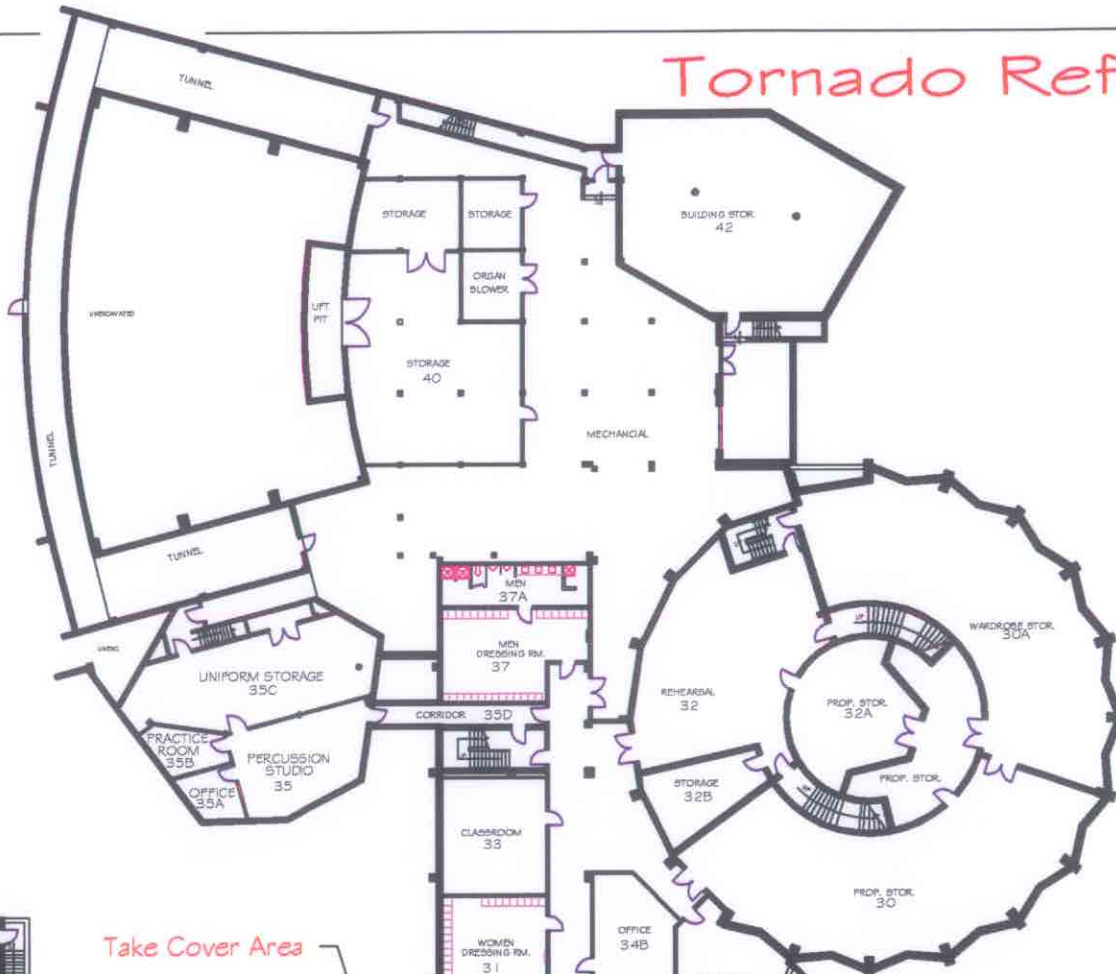
REV. 4/02/100

## THOMPSON CENTER

DEPARTMENT OF FACILITIES SERVICES  
**WASHBURN UNIVERSITY**  
 1701 SW JEWELL  
 TOPEKA, KANSAS

DATE: JANUARY, 1996	
DRAWN BY: K.C. TSUI	
SHEET NO.	DRAWING NO.
OF SHEETS	34a

# Tornado Refuge Area



Take Cover Area

## BASEMENT FLOOR PLAN



REVISED: 8795 N. 25. LM. 485 LM. 1268 MLR 8817 CT. 7941 CT. 4498 B

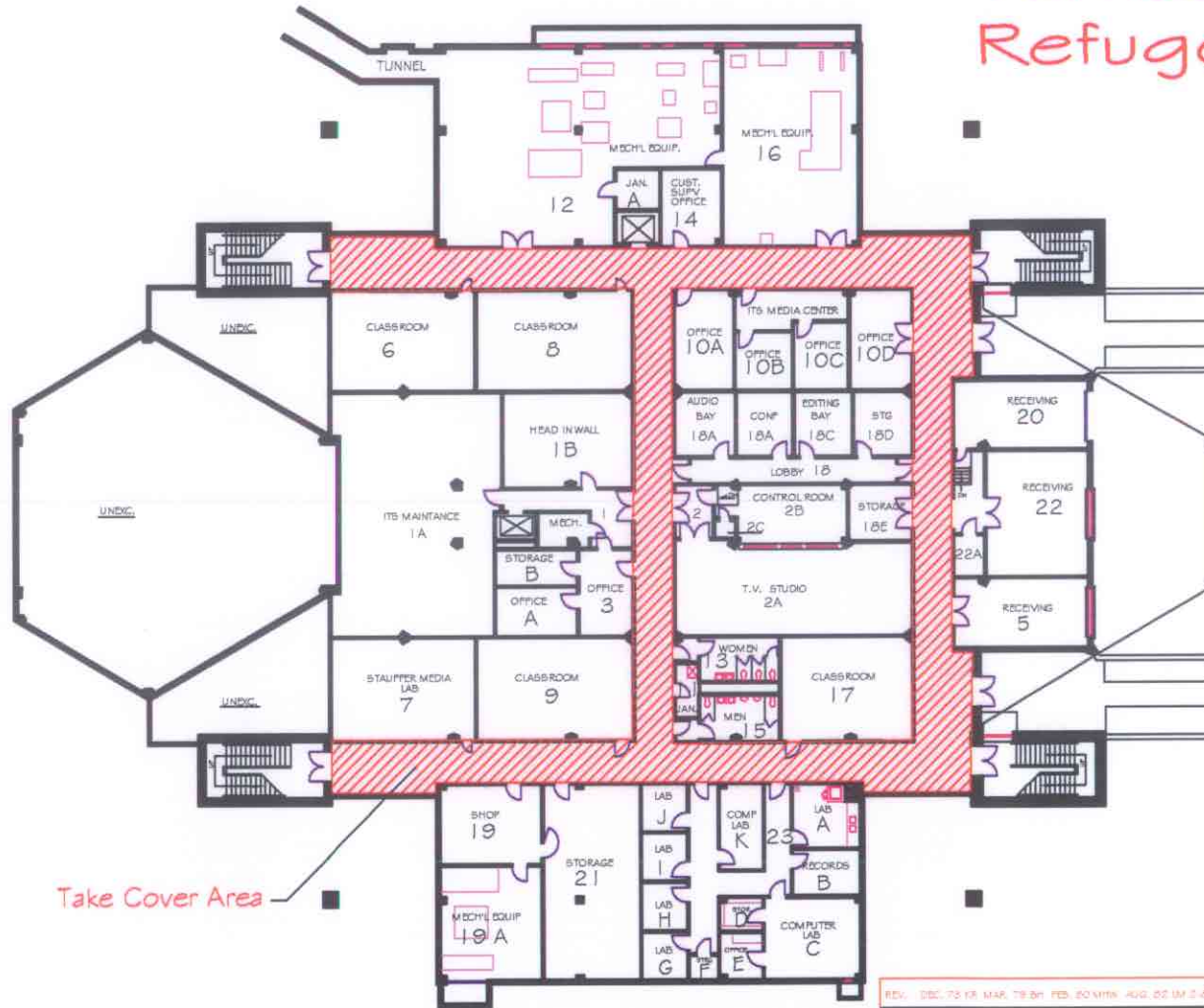
### GARVEY FINE ARTS CENTER

DEPARTMENT OF FACILITIES SERVICES  
**WASHBURN UNIVERSITY**  
 1700 SW JEWELL  
 TOPEKA, KANSAS

DATE: JULY, 1968	DRAWING NO. 15a
DRAWN BY: A.J.	
SHEET NO.	OF SHEETS



Tornado  
Refuge Area



Take Cover Area

# BASEMENT FLOOR PLAN



REV. DEC. 73 BY MAE, TS BY FEB. 20 1974 AUG. 22 1975 BY J.C.T. 4-23-76

## HENDERSON LEARNING CENTER

DEPARTMENT OF FACILITIES SERVICES  
**WASHBURN UNIVERSITY**  
 1850 SW JEWELL  
 TOPEKA, KANSAS

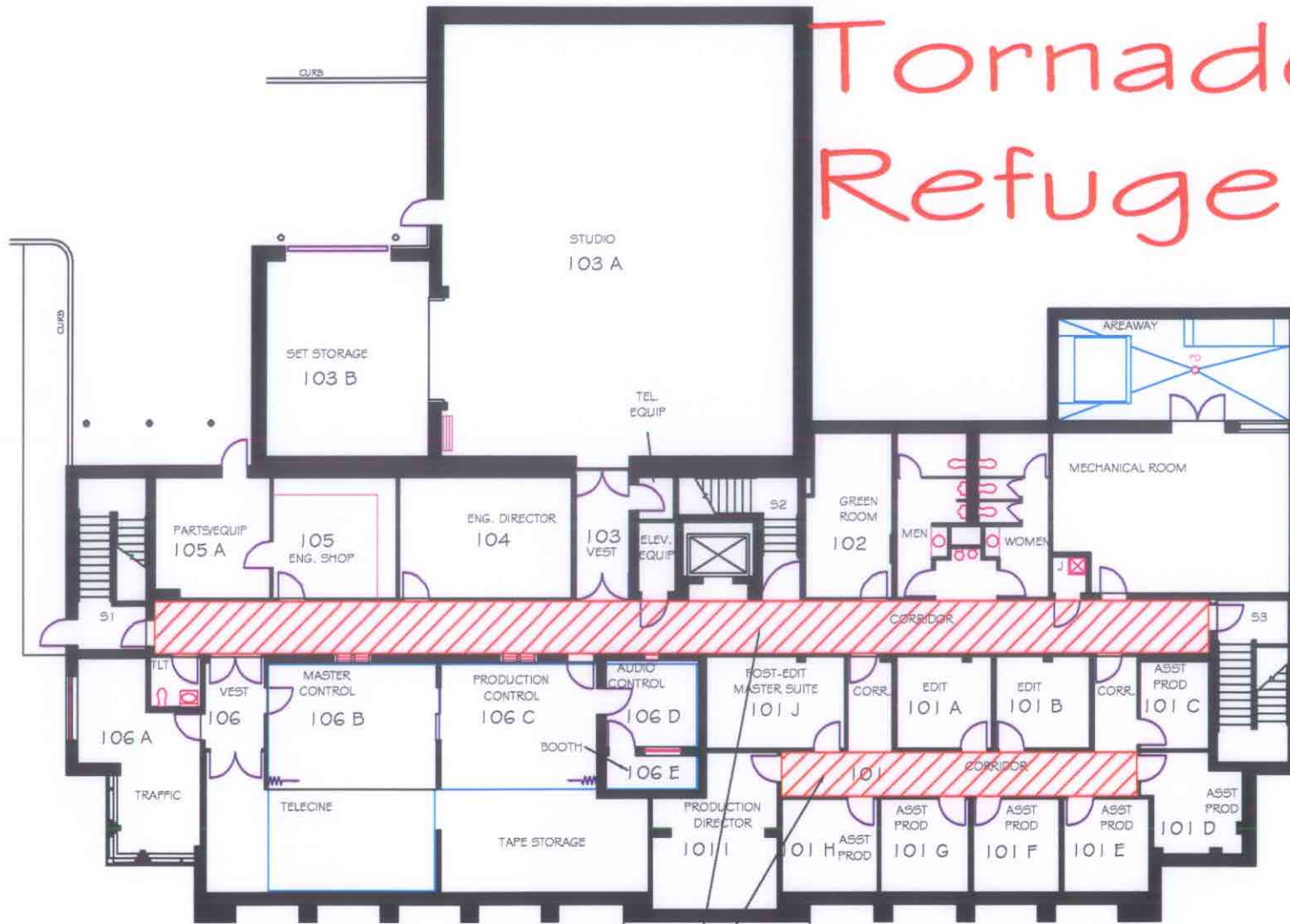
DATE: JULY, 1969

DRAWN BY: BILL WHITE

SHEET NO. DRAWING NO.

OF SHEETS 10a

Tornado  
Refuge Area



Take Cover Areas

LOWER LEVEL



REV. 7-24-1987 403 NLD

**KTUW TV STUDIO**

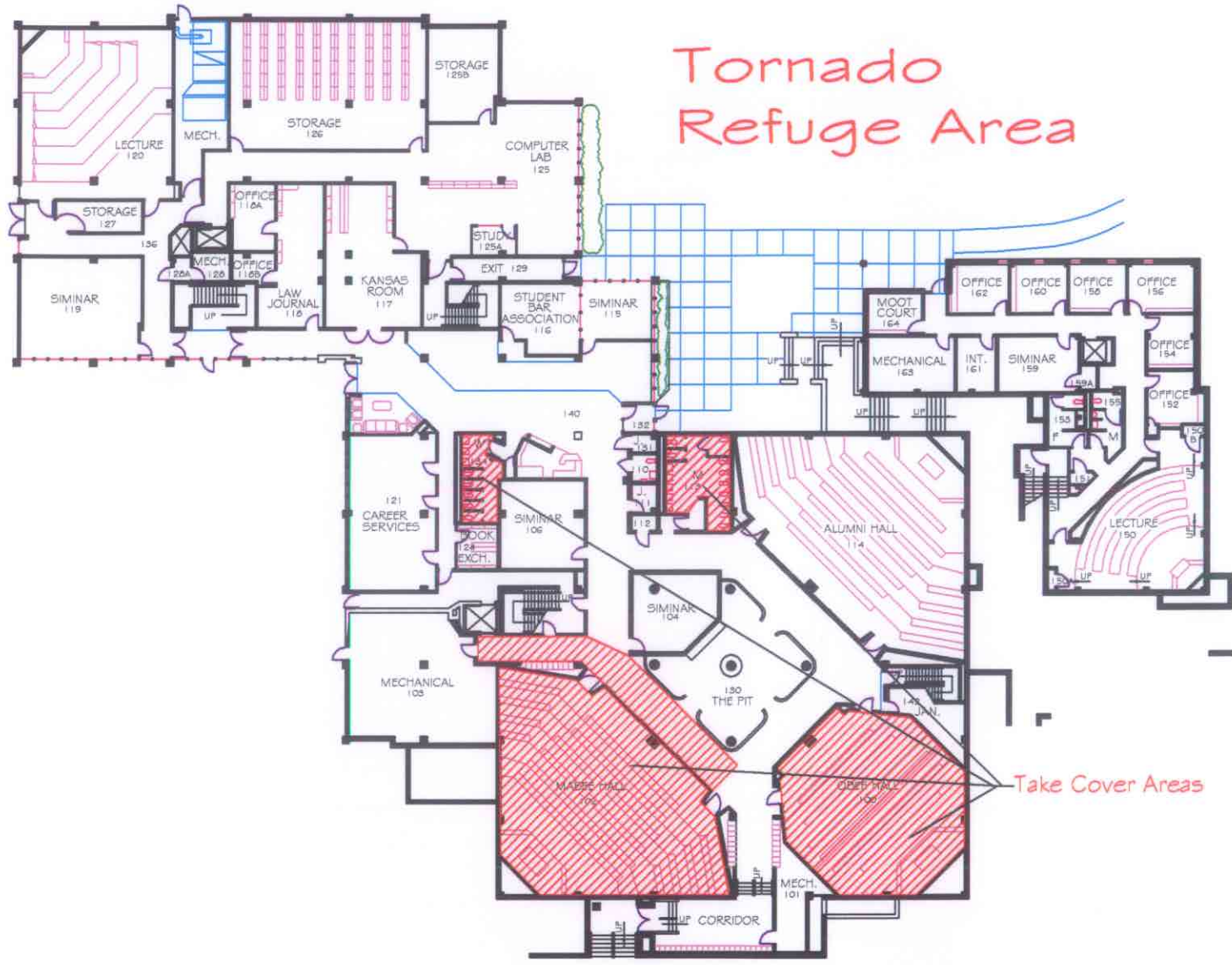
DEPARTMENT OF FACILITIES SERVICES  
**WASHBURN UNIVERSITY**  
 1925 SW JEWELL  
 TOPEKA, KANSAS

DATE: JANUARY, 1993

DRAWN BY: K.C. TSUI

SHEET NO. DRAWING NO.

OF SHEETS 33a



Tornado  
Refuge Area

Take Cover Areas

**FIRST FLOOR PLAN**



VEL. DEC. 1971, K.B. 875 A.L. 1777 M.W. 561 D.A. 1-50 M.L.R. 8-91 S.C.T. 1-92 F.C.T. 9-95 K.C.T. 4-03 NG

**SCHOOL OF LAW**

DEPARTMENT OF FACILITIES SERVICES  
**WASHBURN  
 UNIVERSITY**  
 1811/1801 SW PLASS  
 TOPEKA, KANSAS

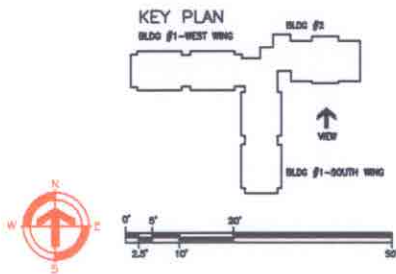
DATE: JULY, 1968	
DRAWN BY: A.J.	
SHEET NO.	DRAWING NO.
OF SHEETS	8a



# Tornado Refuge Area



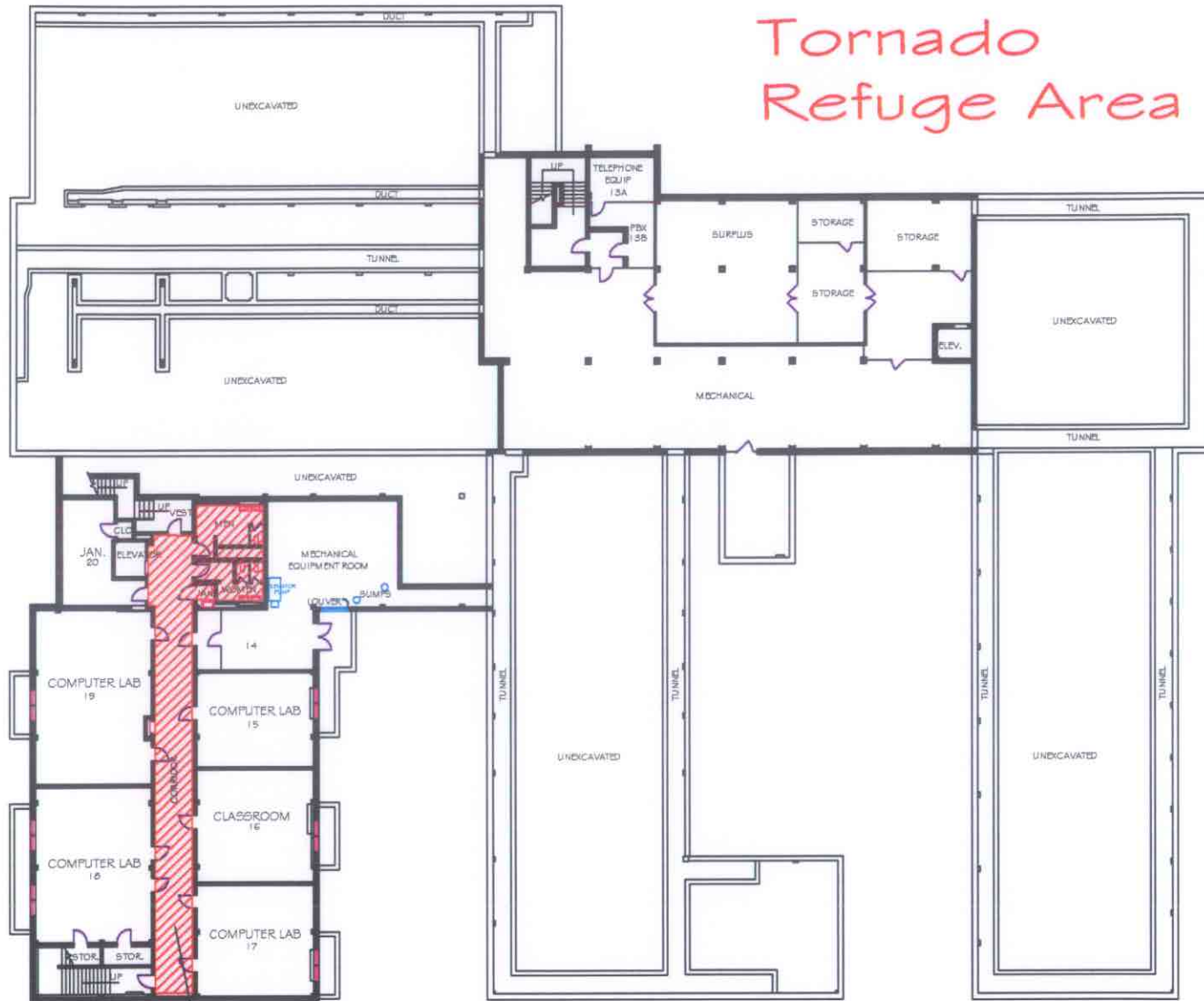
## LOWER LEVEL FLOOR PLAN



FD: 403-145	
<b>LIVING LEARNING CENTER</b>	
DEPARTMENT OF FACILITIES SERVICES	
<b>WASHBURN UNIVERSITY</b>	
1801 SW JEWELL TOPEKA, KANSAS	
DATE: NOVEMBER, 2002	DRAWN BY: JR
SHEET NO.	DRAWING NO.
OF SHEETS	17a



# Tornado Refuge Area



Take Cover Area

## BASEMENT FLOOR PLAN



REV. 10/75 BY SBI D/N SDC 12/20/67 R/R V.C.T. 8/75 A.J. 4-02/66

## MORGAN MEMORIAL BLDG.

DEPARTMENT OF FACILITIES SERVICES  
**WASHBURN  
 UNIVERSITY**  
 1700 SW COLLEGE  
 TOPEKA, KANSAS

DATE: AUGUST, 1967

DRAWN BY: DAVIDSON

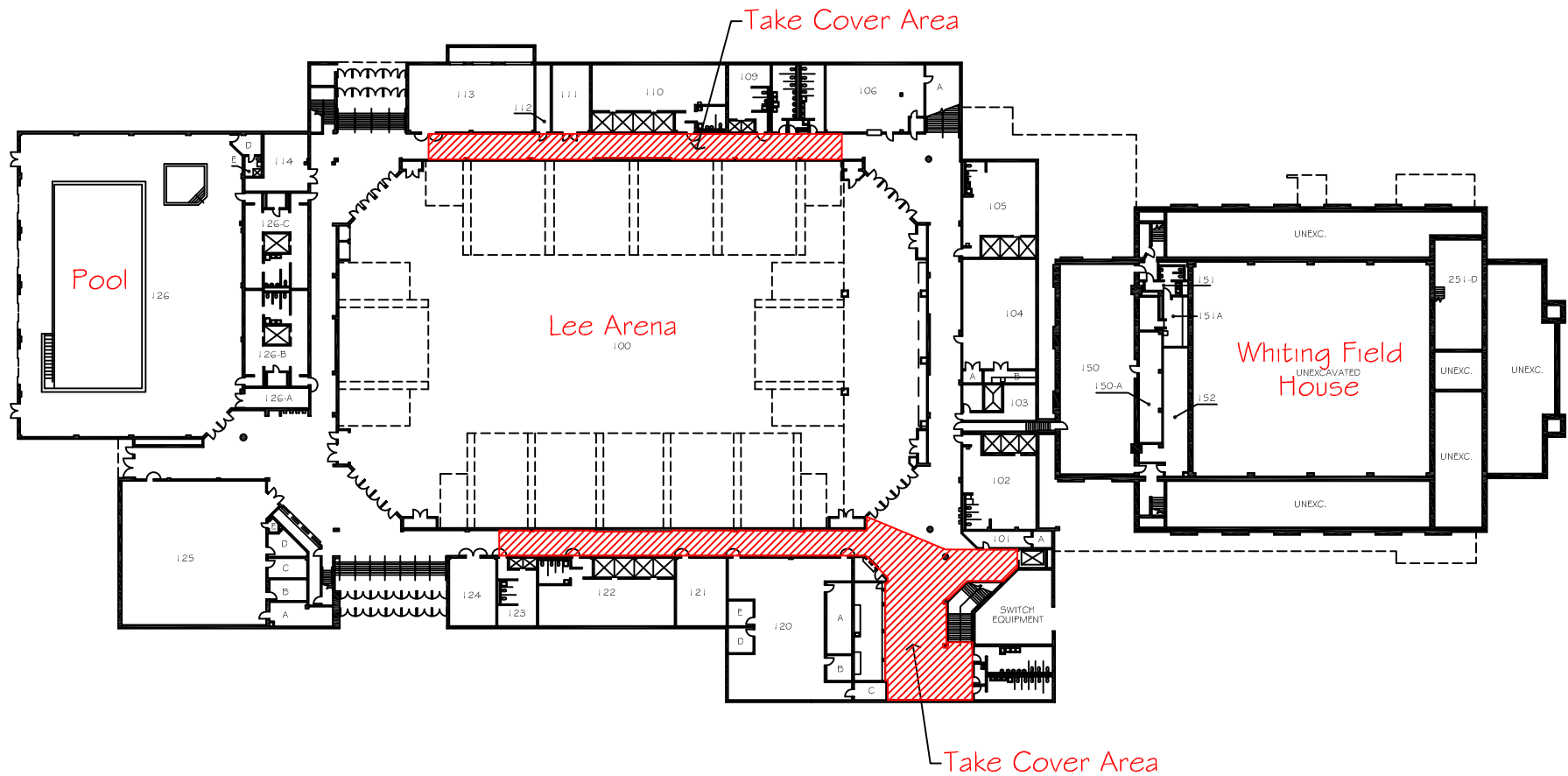
SHEET NO.

DRAWING NO.

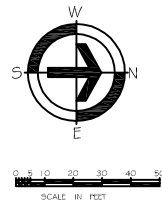
OF SHEETS

14a

# Tornado Refuge Area



## FIRST FLOOR PLAN



REV. 11-83 L.M. 12-85 SKF 2-87 12-88 M.L.R. 9-02 NJG 05-04 NJG 05-05 NJG

### PETRO ALLIED HEALTH CENTER

DEPARTMENT OF FACILITIES SERVICES  
**WASHBURN  
 UNIVERSITY**  
 TOPEKA, KANSAS

DATE: SEPTEMBER, 1983

DRAWN BY: LMM

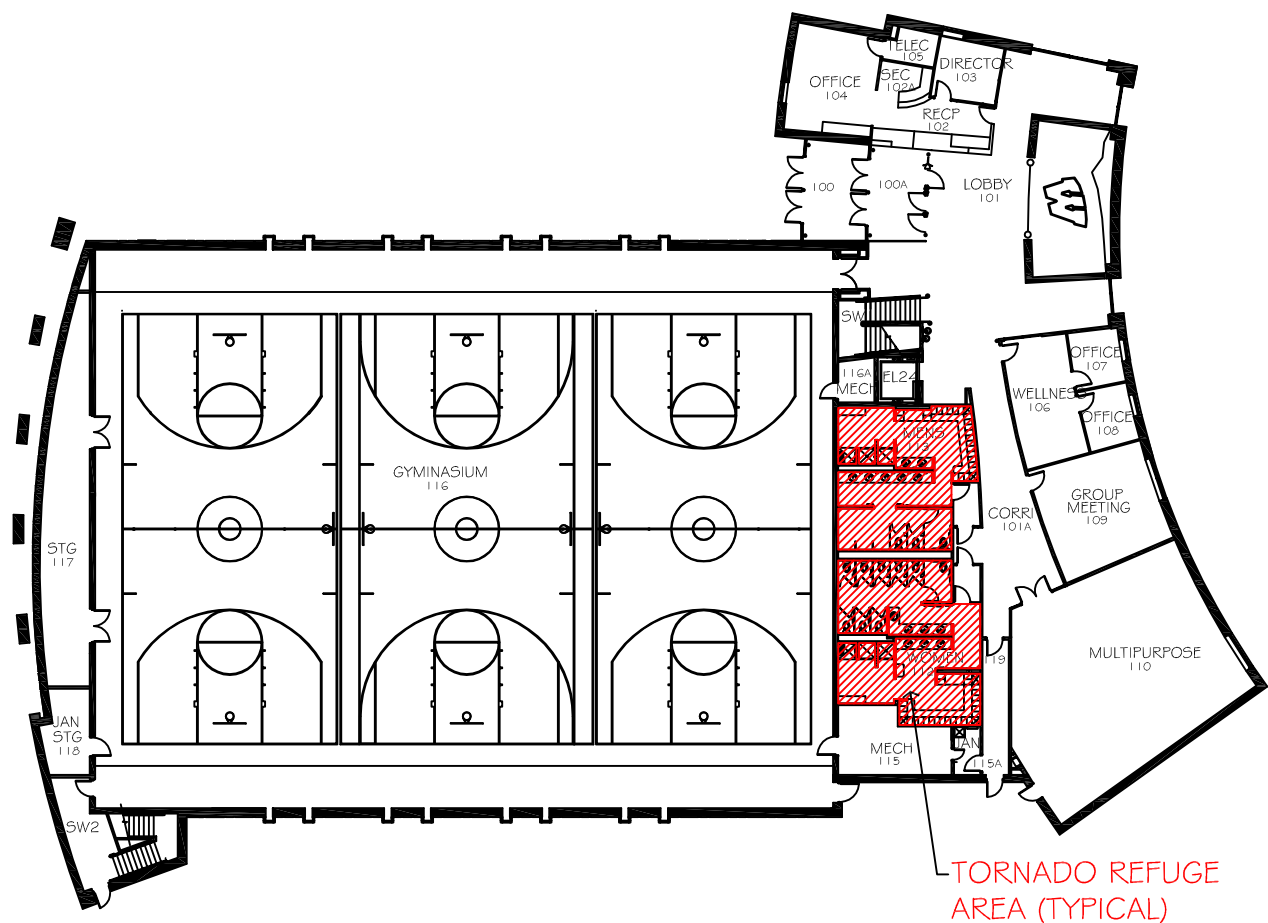
SHEET NO.

DRAWING NO.

OF SHEETS

1 a

# TORNADO REFUGE PLAN



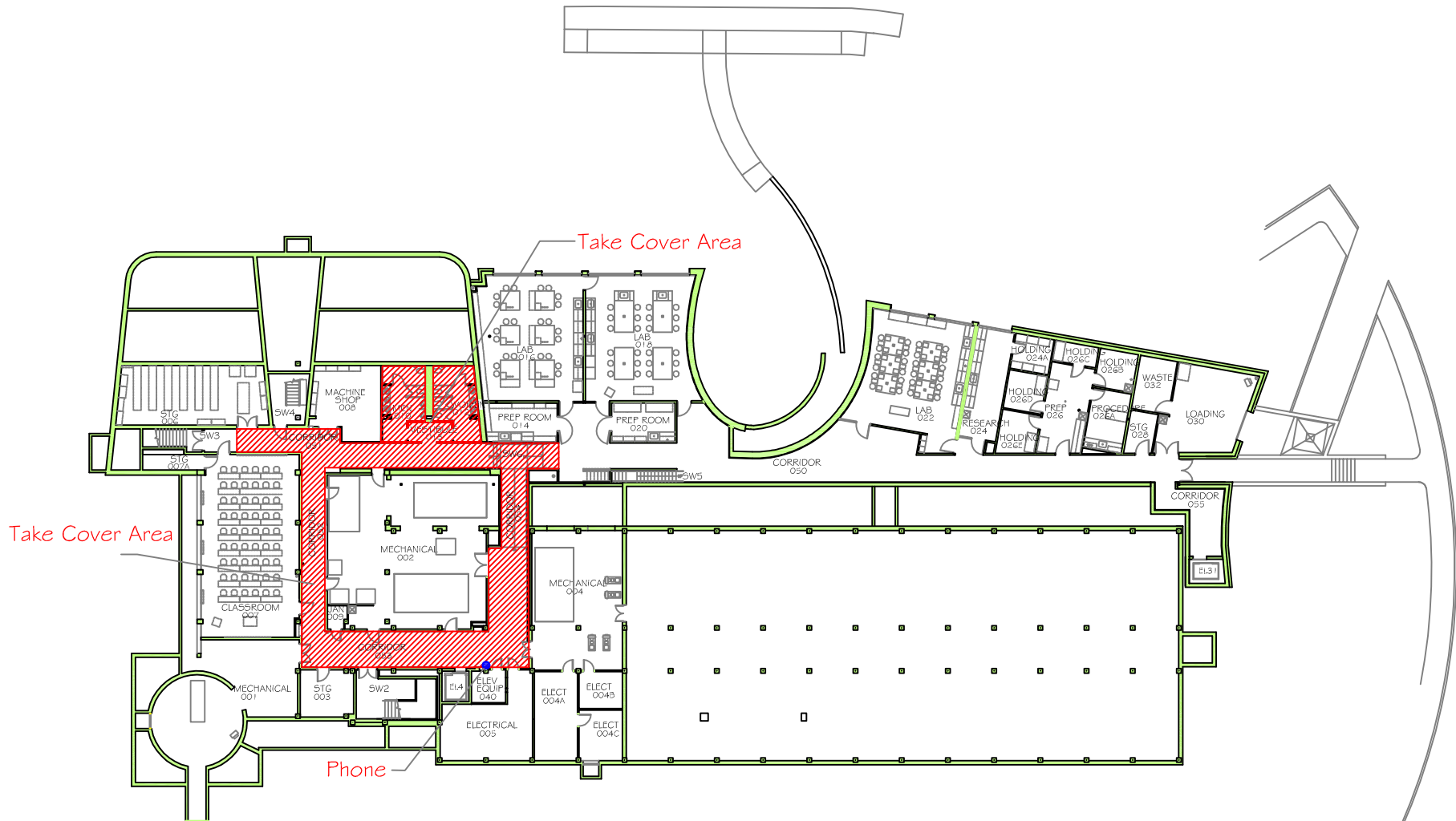
## FIRST FLOOR PLAN



REV. 04-05 NJG 05-05 NJG			
<b>STUDENT REC CENTER</b>			
DEPARTMENT OF FACILITIES SERVICES		DATE: JUNE, 2004	
<b>WASHBURN UNIVERSITY</b>		DRAWN BY: NJG	
1746 SW DUROW DRIVE TOPEKA, KANSAS		SHEET NO.	DRAWING NO.
		OF SHEETS	



# Tornado Refuge Area

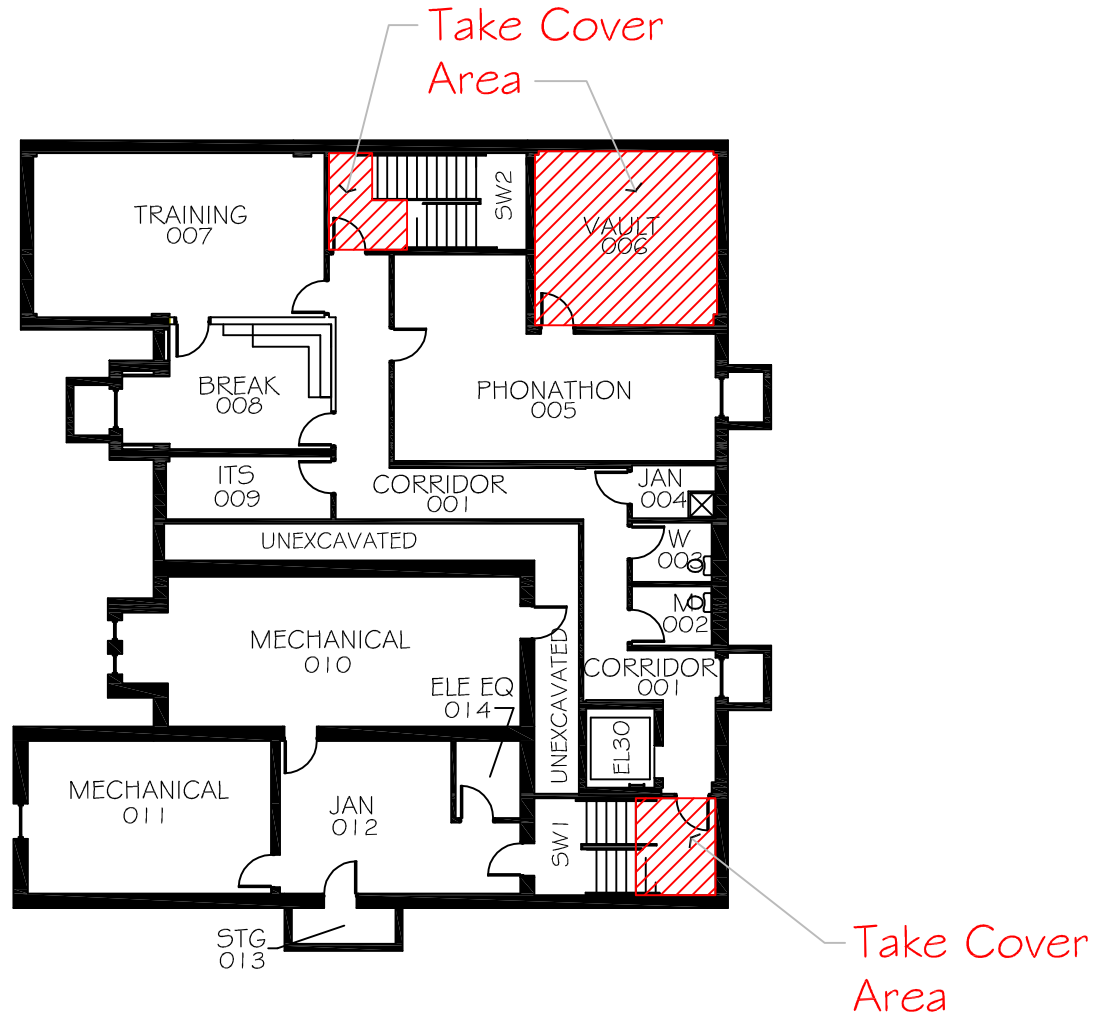


## BASEMENT FLOOR PLAN

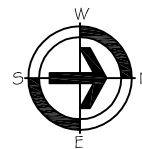


REV.		
<b>STOFFER SCIENCE HALL</b>		
DEPARTMENT OF FACILITIES SERVICES <b>WASHBURN UNIVERSITY</b> 1601 SW 18TH STREET TOPEKA, KANSAS	DATE: JULY, 2007	BUILDING NO. 16
	DRAWN BY: NJG	PAGE NO. 69
	LOCATION CODE ST	

# Tornado Refuge Area



## BASEMENT FLOOR PLAN



REV. 11-05 NJG

### WASHBURN ENDOWMENT

DEPARTMENT OF FACILITIES SERVICES  
**WASHBURN UNIVERSITY**  
 1729 SW MAC VICAR  
 TOPEKA, KANSAS

DATE: NOVEMBER 2005

DRAWN BY: NJG

LOCATION CODE

MV

BUILDING NO.

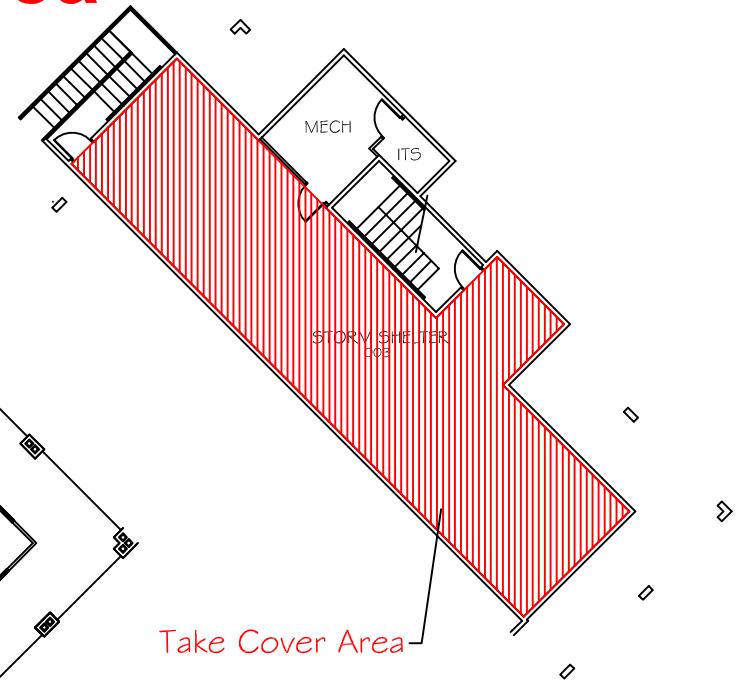
40

PAGE NO.

75

# Tornado Refuge Area

**FIRST FLOOR PLAN**



**BASEMENT PLAN**



REV.	
<b>COMMONS BUILDING</b>	
DEPARTMENT OF FACILITIES SERVICES <b>WASHBURN UNIVERSITY</b> 2001 SW JEWELL TOPEKA, KANSAS	
DATE: JUNE, 2004	
DRAWN BY: NJG	
SHEET NO.	DRAWING NO.
OF SHEETS	39b