



## 2017-2018 University Student Learning Outcomes Report

### Executive Summary

During the 2017-2018 academic year (AY), the five Washburn University (Washburn) Student Learning Outcomes (USLOs) consisted of Critical and Creative Thinking (CCT), Communication (COM), Global Citizenship, Ethics and Diversity (GED), Information Literacy and Technology (ILT), and Quantitative and Scientific Reasoning (QSR). Student scores were rated on a scale of 0 = Not Evaluated, 1 = Beginning, 2 = Developing, 3 = Target, or 4 = Advanced.

The total number of overall student USLO ratings for Summer 2017 was 1,128 scores, Fall 2017 had a total of 8,778, and Spring 2018 had a total of 7,125, for an AY 2017-2018 total of 17,029 overall USLO student ratings. When excluding ratings of 0 = Not Evaluated, the number of overall student USLO ratings decreased by 3.2% in Summer 2017 to 1,092, by 4.5% in Fall 2017 to 8,386 and by 5.6% in Spring 2018 to 6,729; for the AY the total number was 16,207, a decrease of 4.8%. The remainder of the report was based off the 16,207 overall student USLO ratings.

The number of subjects, courses, and sections that were collected during AY 2017-2018 were 31, 141, and 582, respectively; 25 subjects, 57 courses, and 79 sections in Summer 2017; 29 subjects, 108 courses, and 441 sections in Fall 2017; and 31 subjects, 114 courses, and 363 sections in Spring 2018.

By the five USLOs, for the 2017-2018 AY, the number of subjects, courses, sections, and overall student USLO ratings (with 0 = Not Evaluated removed) were:

- CCT = 16 subjects, 54 courses, 170 sections, 4,551 overall student USLO ratings
- COM = 4 subjects, 13 courses, 104 sections, 3,054 overall student USLO ratings
- GED = 15 subjects, 37 courses, 96 sections, 3,201 overall student USLO ratings
- ILT = 5 subjects, 6 courses, 82 sections, 1,721 overall student USLO ratings
- QSR = 9 subjects, 31 courses, 130 sections, 3,689 overall student USLO ratings

For the 2017-2018 AY, COM had the highest percent of overall student USLO ratings at the Target or Advanced performance level with 84.1%, followed by ILT at 82.1%, GED at 74.1%, and CCT at 69.3%. QSR had the lowest percent of student summary scores at Target/Advanced with 68.7%. In examining scores by terms, COM yielded the highest percentage of Target or Advanced performance levels for Summer 2017, Fall 2017, and Spring 2018 (91.8%, 85.5%, and 80.9%, respectively).

The ILT USLO yielded the highest mean scores for overall student USLO ratings for each term and overall: Summer 2017  $\bar{x}$  = 3.56, Fall 2017  $\bar{x}$  = 3.58, Spring 2018  $\bar{x}$  = 3.42, AY 2017-2018  $\bar{x}$  = 3.54. The median for each term for ILT was 4.00.

For USLO ratings by subject, the percent of overall student USLO ratings at the Target or Advanced performance levels were highest in Communication, Information Literacy, English, and Geology. CCT and COM ratings were highest in Communication courses (95.7% and 89.1%, respectively). For GED, the highest ratings were in English (87.5%). For the ILT USLO, Information Literacy courses received the highest ratings (94.8%). The QSR overall student USLO ratings were highest in Geology courses with 84.8% scoring at the Target or Advanced performance levels.

## Introduction

The five Washburn University Course-Embedded Student Learning Outcomes (USLOs) consist of Critical and Creative Thinking (CCT), Communication (COM), Global Citizenship, Ethics and Diversity (GED), Information Literacy and Technology (ILT), and Quantitative and Scientific Reasoning (QSR). General education courses contain student learning objectives tailored to the curriculum. These objectives vary in number for each course from one to nine. Student performance in general education courses is rated on the student learning objectives, on a scale of 0 = Not Evaluated, 1 = Beginning, 2 = Developing, 3 = Target, and 4 = Advanced. Additionally, all scoring includes an overall student USLO rating score that represents the overall score of student performance in relation to the course USLO.

This report contains the results of USLO scores from the 2017-2018 academic year (AY) which consisted of the terms Summer 2017, Fall 2017 and Spring 2018. In most reporting of results, the scoring of 0 = Not Evaluated has been removed from analysis. In addition, ratings of 3 = Target and 4 = Advanced performance levels are highlighted in the report; these ratings are considered proficient in the USLO.

## Overall Student USLO Ratings

The total number of cases in the AY 2017-2018 data was 18,726; however, 1,697 were missing overall student USLO ratings. Valid ratings for Summer 2017 were 1,128 scores, Fall 2017 had a total of 8,776 and Spring 2018 had a total of 7,125, for an AY 2017-2018 total of 17,029 overall student USLO ratings. Approximately 3.2% of the overall student USLO ratings submitted for Summer 2017 were scored as Not Evaluated (0), 4.5% of the overall student USLO ratings submitted for Fall 2017 were Not Evaluated (0), and 5.6% of the overall student USLO ratings submitted for Spring 2017 were Not Evaluated (0). In total, the number of 0 = Not Evaluated scores totaled 822 or 4.8%. Ratings of 0 were removed from the data for analysis in this report.

The number of valid overall student USLO ratings submitted by Washburn faculty represented in the analyses throughout this report were 1,092 for Summer 2017, 8,386 for Fall 2017, and 6,729 for Spring 2018 (see Table 1). The most overall student USLO ratings were entered by faculty for courses in Fall 2017 (51.7%) and this was a consistent trend across most of the USLO Attributes; the exception was GED where 0.4% more scores were entered by faculty in Spring 2018.

Table 1. Number and Percentage of Overall Student USLO Ratings by USLO Attribute and Term

USLO Attribute	Summer 2017	Fall 2017	Spring 2018	AY 2017-2018
CCT	302 (6.6%)	2,242 (49.3%)	2,007 (44.1%)	4,551 (100%)
COM	244 (8.0%)	1,598 (52.3%)	1,212 (39.7%)	3,054 (100%)
GED	212 (6.6%)	1,488 (46.5%)	1,501 (46.9%)	3,201 (100%)
ILT	63 (3.7%)	1,266 (73.9%)	383 (22.4%)	1,712 (100%)
QSR	271 (7.3%)	1,792 (48.6%)	1,626 (44.1%)	3,689 (100%)
<b>Total</b>	<b>1,092</b> <b>(6.7%)</b>	<b>8,386</b> <b>(51.7%)</b>	<b>6,729</b> <b>(41.5%)</b>	<b>16,207</b> <b>(100%)</b>

## Number of Sections, Courses, and Subjects

The five USLOs were assessed during Summer 2017 in 79 sections of 57 general education courses in 25 subjects. In Fall 2017, there were 441 sections of 108 general education courses in 29 subjects assessed. In Spring 2018, 363 sections of 114 general education courses in 31 subjects were assessed. Overall the number of sections was 582 for 141 general education courses in 31 subjects. See Table 2 for subjects, courses, and sections by USLO Attribute and Term.

Table 2. Number of Subjects, Courses, and Sections by USLO Attribute and Term

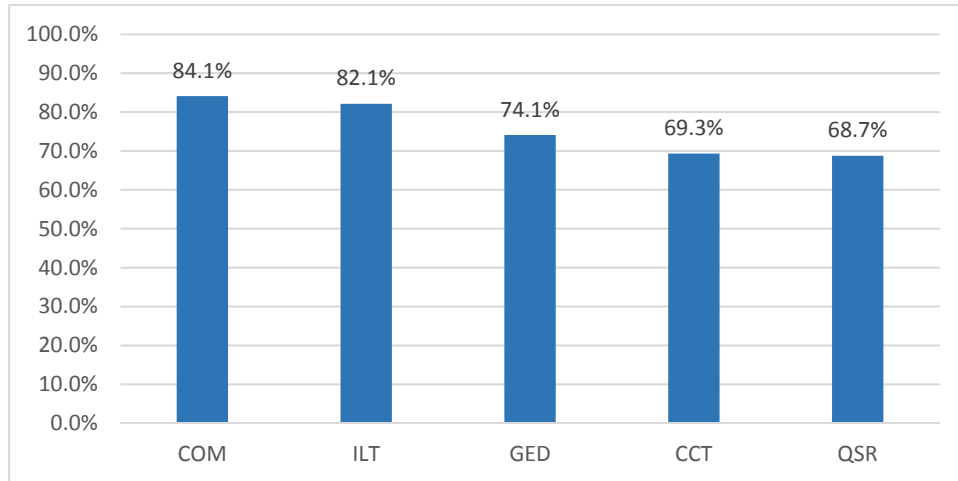
USLO Attribute	Subjects	Courses	Sections
<b>Summer 2017</b>			
<b>CCT</b>	12	20	24
<b>COM</b>	2	6	20
<b>GED</b>	10	12	14
<b>ILT</b>	4	3	4
<b>QSR</b>	8	16	17
<b>Total</b>	<b>25</b>	<b>57</b>	<b>79</b>
<b>Fall 2017</b>			
<b>CCT</b>	15	41	115
<b>COM</b>	4	11	86
<b>GED</b>	13	24	65
<b>ILT</b>	5	6	75
<b>QSR</b>	9	26	100
<b>Total</b>	<b>30</b>	<b>108</b>	<b>441</b>
<b>Spring 2018</b>			
<b>CCT</b>	15	41	106
<b>COM</b>	4	12	73
<b>GED</b>	15	28	68
<b>ILT</b>	4	5	27
<b>QSR</b>	9	28	89
<b>Total</b>	<b>31</b>	<b>114</b>	<b>363</b>
<b>AY 2017-2018</b>			
<b>CCT</b>	16	54	170
<b>COM</b>	4	13	104
<b>GED</b>	15	37	96
<b>ILT</b>	5	6	82
<b>QSR</b>	9	31	130
<b>Total</b>	<b>31</b>	<b>141</b>	<b>582</b>

The USLOs assessed in the most sections and courses were CCT, which was assessed by 170 sections and 54 courses in 16 subjects. This was followed by COM which was assessed in 104 sections and 13 courses in 4 subjects, and GED, assessed in 96 sections and 37 courses in 15 subjects. QSR was assessed in 130 sections and 31 courses in 9 subjects. During AY 2017-2018, the ILT USLO was assessed in the fewest sections and the fewest courses at a total of 82 sections and 6 courses in 5 subjects.

## Percent of Student Summary Scores by Performance Levels and USLO

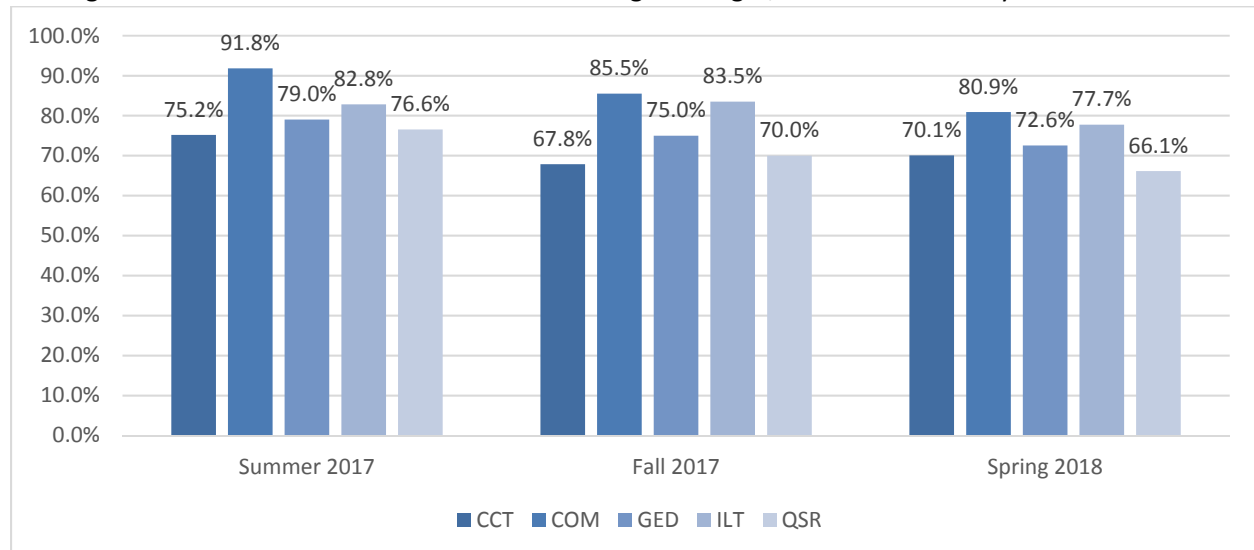
The USLO with the highest percentage of overall student ratings at the Target or Advanced performance levels was COM at 84.1%. The second highest percentage was ILT with 82.1% of scores at Target or Advanced. The QSR and CCT USLO percentages were 74.1% and 69.3%, respectively. QSR had the lowest percent (68.7%) of the five USLOs at the Target or Advanced performance levels; see Figure 1.

Figure 1. Percent of Overall Student USLO Ratings at Target/Advanced Levels by USLO



For Summer 2017, COM had the highest percentage of overall student USLO ratings at the Target or Advanced performance levels (91.8%), followed by ILT with 82.8%. GED and QSR were the third and fourth highest at 79.0% and 76.6%, respectively. The lowest Target or Advanced performance levels in Summer 2017 were for CCT (75.2%). In Fall 2017, again COM had the highest performance level of Target or Advanced overall student USLO ratings at 85.5%, with ILT at a very similar level (83.5%). GED was third highest at 75.0%. QSR and CCT were the lowest percentages at 70.0% and 67.8%, respectively. For Spring 2018, the highest percentage was again for the COM USLO at 80.9%. ILT was the second highest at 77.7%, and GED performance levels were at 72.6%. CCT and QSR had the lowest overall student USLO ratings for Spring 2018 at 70.1% and 66.1%, respectively. See Figure 2.

Figure 2. Percent of Overall Student USLO Ratings at Target/Advanced Levels by USLO and Term



Next, the four USLO performance levels, 1 = Beginning, 2 = Developing, 3 = Target and 4 = Advanced, were analyzed, and the mean, median, and standard deviation was generated by attribute and term, see Table 3. The highest mean scores for each term and AY were from ILT. The mean score for Fall 2017 scores for ILT were the highest of all USLO scores at 3.58. The ILT mean score was slightly lower in Summer 2017 ( $\bar{x} = 3.56$ ) and was 3.42 for Spring 2018, and 3.54 for the AY. The median for each term for ILT was 4.00. COM also yielded a 4.00 median for Summer 2017. COM had the second highest mean scores at 3.47 in Summer 2017, 3.24 in Fall 2017 and Spring 2018, and 3.26 for the AY. The USLO QSR had the third highest mean score in Summer 2017 with 3.20; however, the mean scores of 3.05 in Fall 2017, 2.95 in Spring 2018, and 3.02 for the AY were the second lowest scores. The mean score for GED was the second lowest score in Summer 2017 ( $\bar{x} = 3.15$ ); GED scores rebounded in Fall 2017, Spring 2018, and for the AY with the third highest mean scores ( $\bar{x}s = 3.17, 3.07, \text{ and } 3.12$ , respectively). The mean score for CCT was the lowest score in Summer 2017 ( $\bar{x} = 3.06$ ), Fall 2017 ( $\bar{x} = 2.82$ ), Spring 2018 ( $\bar{x} = 2.90$ ), and for the AY ( $\bar{x} = 2.87$ ) with scores near the 3 = Target performance level.

Table 3. Mean and Standard Deviation of Overall Student USLO Ratings by USLO Attribute and Term

USLO Attribute	Mean	Median	Standard Deviation	Total
<b>Summer 2017</b>				
CCT	3.06	3.00	0.86	302
COM	3.47	4.00	0.68	244
GED	3.15	3.00	0.77	212
ILT	3.56	4.00	0.80	63
QSR	3.20	3.00	0.83	271
<b>Total</b>	<b>3.23</b>	<b>3.00</b>	<b>0.81</b>	<b>1,092</b>
<b>Fall 2017</b>				
CCT	2.82	3.00	0.97	2,242
COM	3.24	3.00	0.73	1,598
GED	3.17	3.00	0.87	1,488
ILT	3.58	4.00	0.74	1,266
QSR	3.05	3.00	0.88	1,792
<b>Total</b>	<b>3.12</b>	<b>3.00</b>	<b>0.89</b>	<b>8,386</b>
<b>Spring 2018</b>				
CCT	2.90	3.00	0.99	2,007
COM	3.24	3.00	0.73	1,212
GED	3.07	3.00	0.88	1,501
ILT	3.42	4.00	0.87	383
QSR	2.95	3.00	0.88	1,626
<b>Total</b>	<b>3.04</b>	<b>3.00</b>	<b>0.90</b>	<b>6,729</b>
<b>AY 2017-2018</b>				
CCT	2.87	3.00	0.97	4,551
COM	3.26	3.00	0.73	3,054
GED	3.12	3.00	0.87	3,201
ILT	3.54	4.00	0.78	1,712
QSR	3.02	3.00	0.88	3,689
<b>Total</b>	<b>3.10</b>	<b>3.00</b>	<b>0.89</b>	<b>16,191</b>

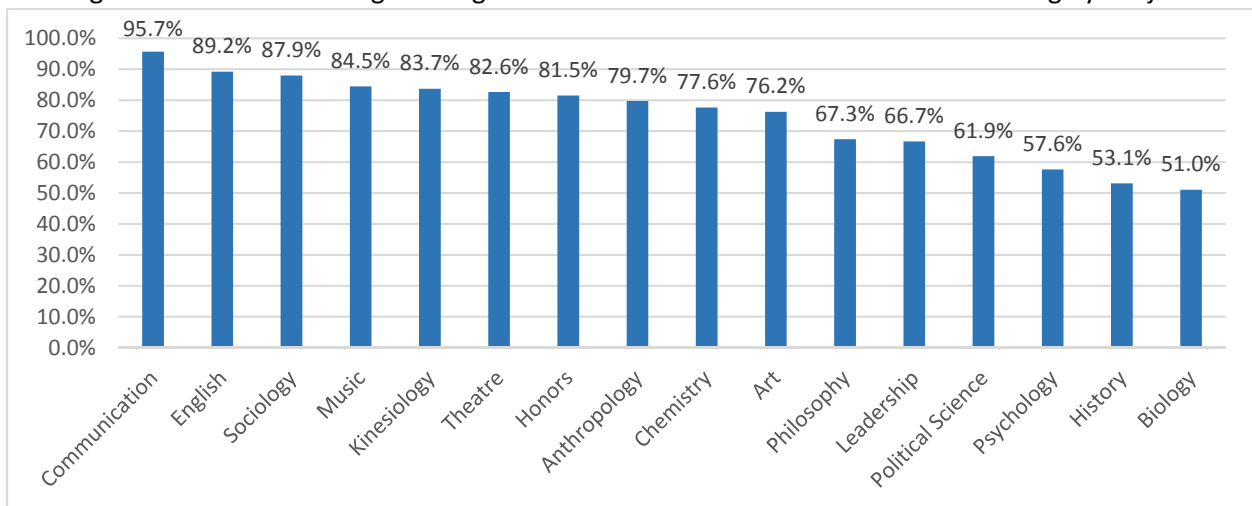
### Overall Student USLO Ratings by Subject

The overall student USLO ratings within each USLO were disaggregated by the subject area in which the USLO scores were assessed and scored. The percent of scores classified at the Target or Advanced performance levels for the 2017-2018 AY were examined for patterns in the percentage trends.

### Critical and Creative Thinking by Subject

The percent of student USLO ratings at the Target or Advanced performance levels for CCT were highest for courses in the subject areas of Communication (95.7%), English (89.2%), and Sociology (87.9%). Music, Kinesiology, Theatre, and Honors had 90-80% of Target or Advanced ratings. The courses assessing CCT at 80-70% Target or Advanced ratings were in the subjects Anthropology, Chemistry, and Art. The subjects with the lowest percent of student ratings at Target or Advanced were Philosophy, Leadership, Political Science, Psychology, History, and Biology. See Figure 3.

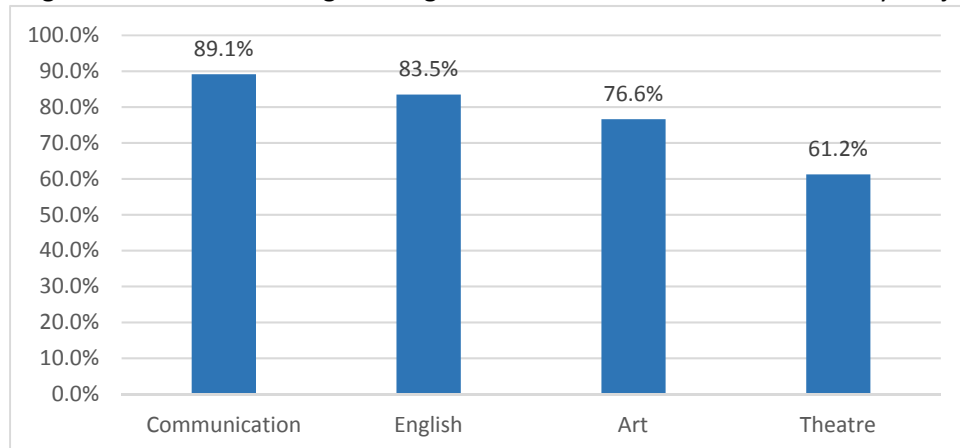
Figure 3. Percent of Ratings at Target or Advanced for Critical and Creative Thinking by Subject



### Communication by Subject

Four subjects assessed COM during the 2017-2018 AY. The percent of student USLO ratings at the Target or Advanced performance levels for COM ranged from 90-60%. Communication was the subject with the highest percent (89.1%), followed by English (83.5%), Art (76.6%), and Theatre (61.2%). See Figure 4.

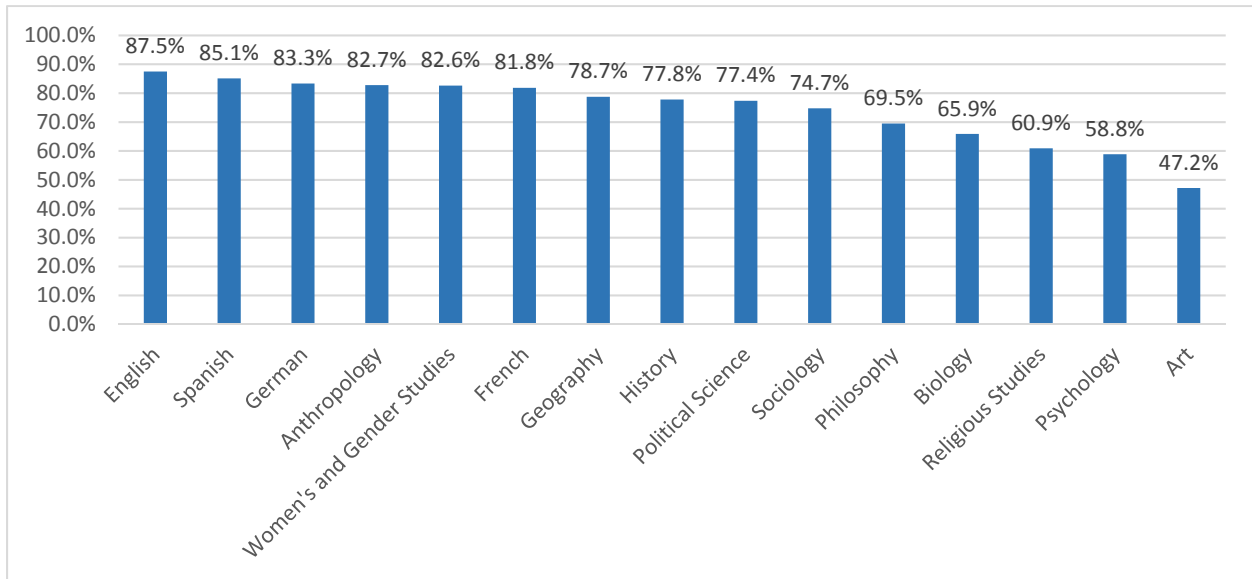
Figure 4. Percent of Ratings at Target or Advanced for Communication by Subject



### Global Citizenship, Ethics, and Diversity by Subject

The GED student USLO ratings at Target or Advanced were highest in the subjects of English, French, and German (87.5%, 85.1%, 83.3%, respectively). Anthropology, Women’s and Gender Studies, and French were rated similarly at 82.7%, 82.6% and 81.8%, respectively. The following subjects were rated between 80-70%: Geography, History, Political Science, and Sociology. Philosophy, Biology, and Religious Studies were between 70-60%. The subjects of Psychology and Art were rated at Target or Advanced percentages less than 60%. See Figure 5.

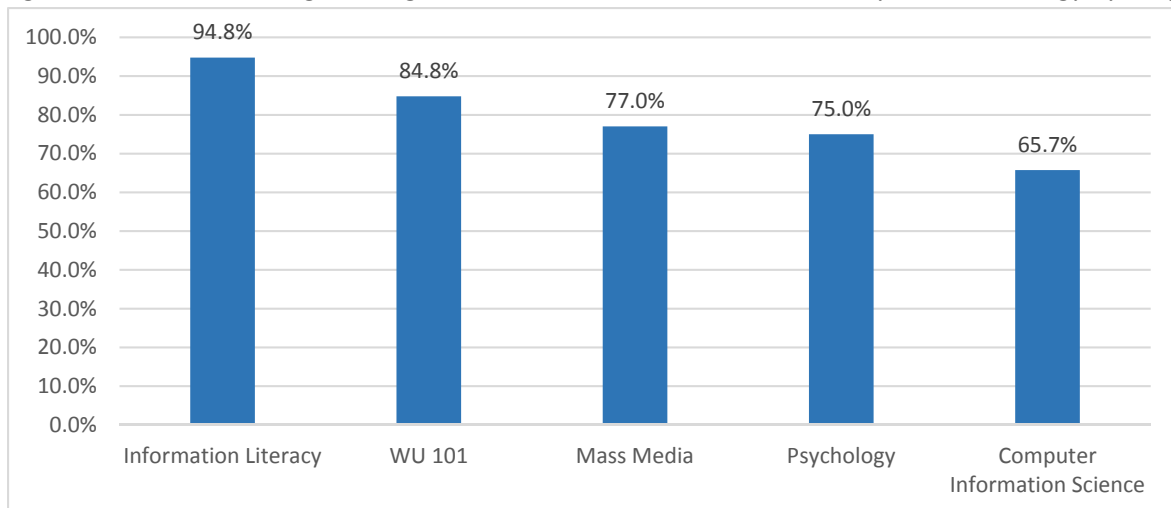
Figure 5. Percent of Ratings at Target or Advanced for Global Citizenship, Ethics and Diversity by Subject



### Information Literacy and Technology by Subject

The ILT courses assessed with this USLO spanned across five subjects. Information Literacy and WU 101 were rated the highest at 94.8% and 84.8%, respectively. Mass Media and Psychology were rated at 77.0% and 75.0%. Computer Information Science received performance level scoring of Target or Advanced for 65.7% of student ratings. See Figure 6.

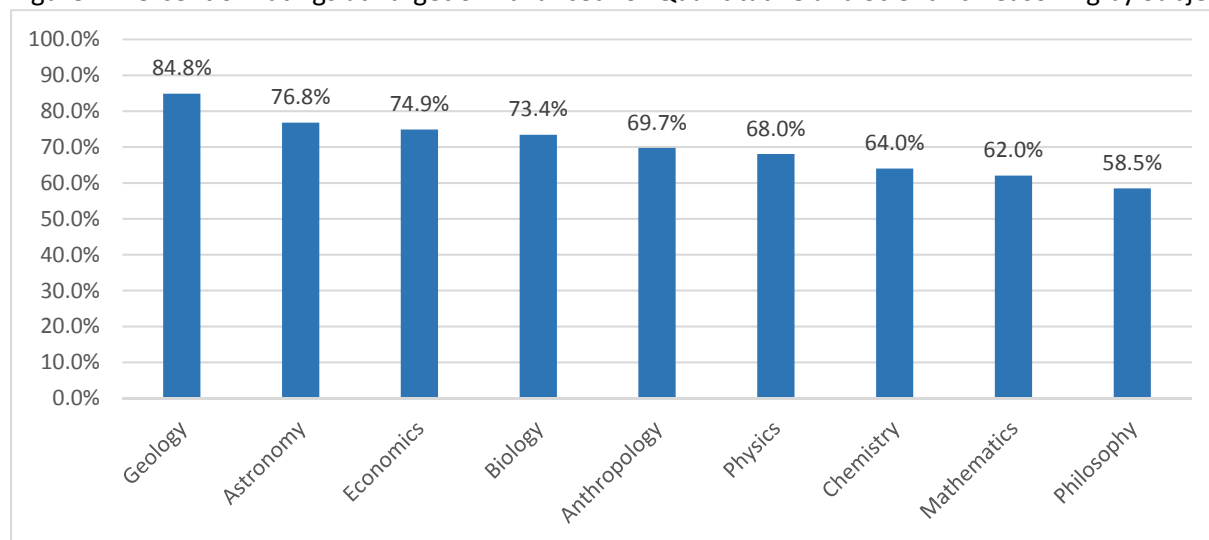
Figure 6. Percent of Ratings at Target or Advanced for Information Literacy and Technology by Subject



### Quantitative and Scientific Reasoning by Subject

The percent of student USLO ratings at the Target or Advanced performance levels for QSR were highest for courses the subject area of Geology (84.8%). Astronomy, Economics, and Biology were also rated fairly highly at 80-70%. Anthropology, Physics, Chemistry, and Mathematics were rated between 70-60%. Philosophy received ratings at 58.5%. See Figure 7.

Figure 7. Percent of Ratings at Target or Advanced for Quantitative and Scientific Reasoning by Subject



### Overall Observations and Limitations

Approximately half of the overall student USLO ratings are collected in Fall 2017 ( $n = 8,776$ , 51.5%) out of an AY 2017-2018 total of 17,029 overall USLO student ratings. The USLOs CCT and GED were assessed in the most subjects, courses, and sections, while COM and QSR were not assessed as much, and ILT was the least assessed. However, COM and ILT were the top two USLOs rated at the Target or Advanced performance levels with COM having the highest percentage overall for the AY and for each term. Additionally, when assessing the four USLO performance levels of overall USLO student ratings, COM and ILT had the largest mean and median scores of all five USLOs. CCT and ILT yielded the highest performance levels at Target and Advanced in the subjects of Communication (95.7%) and Information Literacy (94.8%), respectively.

There were 1,697 cases missing overall student USLO ratings, and when also excluding ratings of 0 = Not Evaluated, the total number of overall student USLO ratings decreased from 18,726 to 16,207, a percentage decrease of 13.5%. The number and percent of missing or 0 for the overall student USLO rating is considerable. These excluded overall student USLO ratings may have contributed to the variability in ratings at Target or Advanced performance levels, as well as the ratings of the USLOs by subject.

During the initial analyses of the USLO data, it was noted that ILT had especially low overall student USLO ratings. This was attributed to missing overall USLO student ratings for all WU 101 courses, which comprise the majority of ILT subjects, courses, and sections. It was determined that the rounded mean of the scores' five objectives would be used as the overall USLO student rating for this report. The rating of overall scores for WU 101 courses has been resolved for the 2018-2019 USLO data collection.